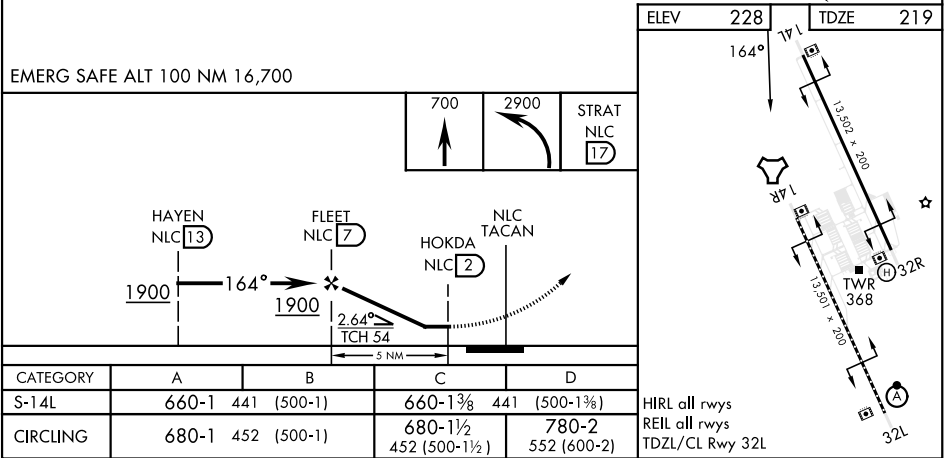
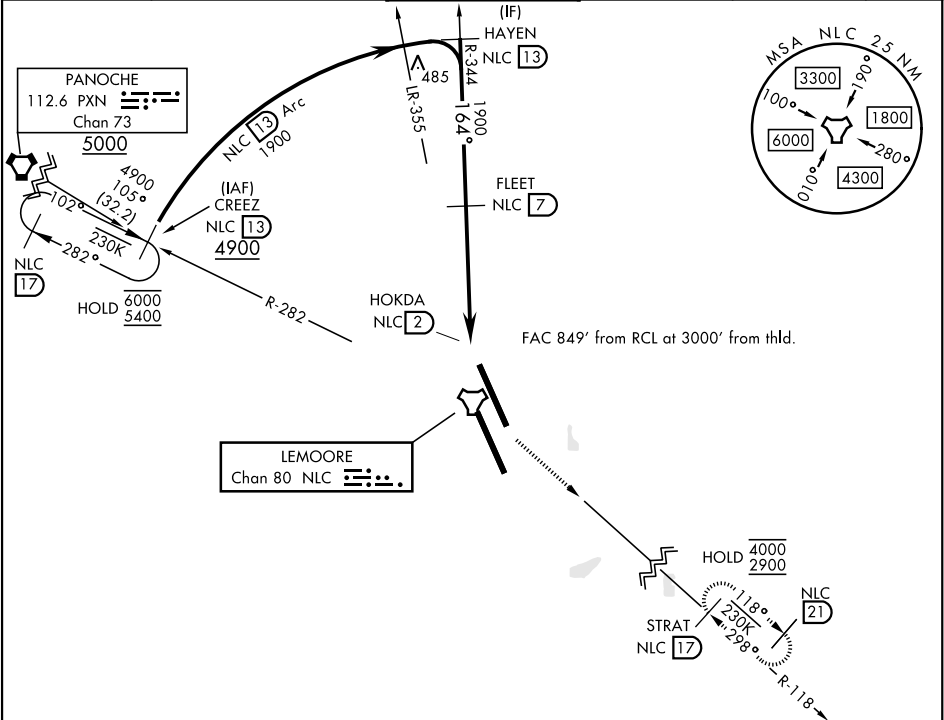


TACAN	NLC	APCH CRS	Rwy Idg
Chan	80	164°	13,502
			TDZE
			219
			Arpt Elev
			228

[USN]

TACAN Y RWY 14L
LEMOORE NAS (REEVES FIELD) (KNLC)

ATIS ★ 121.575 327.15		APP CON 124.1 269.025 (N) 118.15 269.025 (S)		TOWER ★ 128.3 340.2		GND CON 121.65 305.2		CLNC DEL 124.1 371.9		ASR/PAR
--------------------------	--	--	--	------------------------	--	-------------------------	--	-------------------------	--	---------



SW-2, 07 AUG 2025 to 04 SEP 2025

SW-2, 07 AUG 2025 to 04 SEP 2025