

LEMOORE, CALIFORNIA

RNAV (GPS) RWY 32R

WAAS Chan 60335 W32B	APCH CRS 322°	Rwy Idg 13,502 TDZE 221 Arpt Elev 228
--	-------------------------	--

[USN]

LEMOORE NAS (REEVES FIELD) (KNLC)

RNP APCH - GPS



MISSED APPROACH: Climb to 1200, then climbing right turn to 2000 direct HAYEN and hold.

ATIS ★
121.575 327.15

APP CON
124.1 269.025 (N)
118.15 269.025 (S)

TOWER★
128.3 360.2

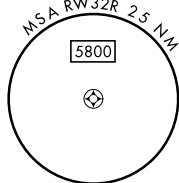
GND CON
121.65 305.2

CLNC DEL
124.1 371.9

ASR/PAR

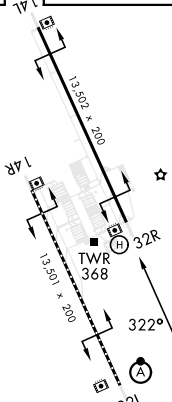
Simultaneous approaches authorized.
LNAV procedure NA during simultaneous operations.
Use of FD or AP providing RNAV track guidance required
during simultaneous operations.

For uncompensated Baro-VNAV systems, LNAV/VNAV procedure NA below -15°C (5° F) and above 54° C (129° F).

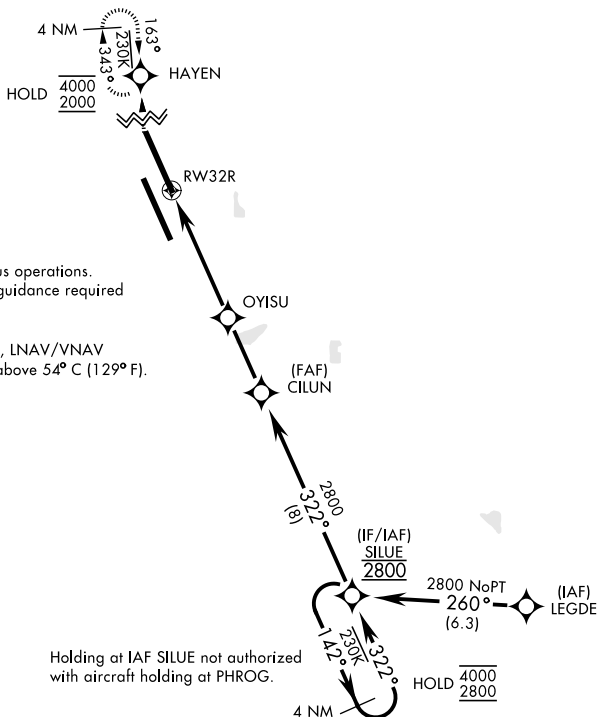


EMER SAFE ALT 100 NM 16.700

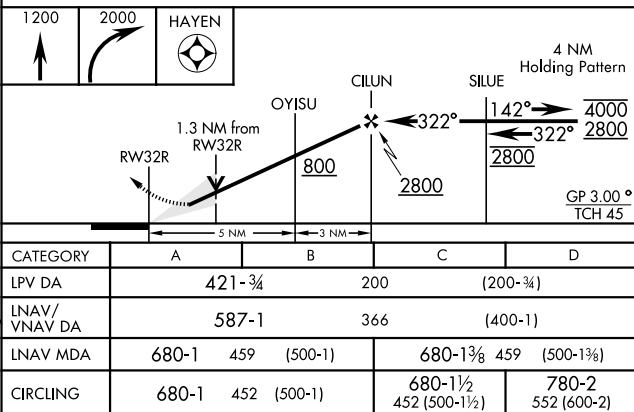
ELEV	228		TDZE	221
------	-----	--	------	-----



HIRL all rwys
REIL all rwys
TDZL/CL Rwy 32L



Holding at IAF SILUE not authorized
with aircraft holding at PHROG.



LEMOORE, CALIFORNIA

36° 20'N-19° 57'W

LEMOORE NAS (REEVES FIELD) (KNLC)

Amdt 7 12JUN25

RNAV (GPS) RWY 32R

SW-2, 07 AUG 2025 to 04 SEP 2025

SW-2, 07 AUG 2025 to 04 SEP 2025