

RNAV (GPS) RWY 32L

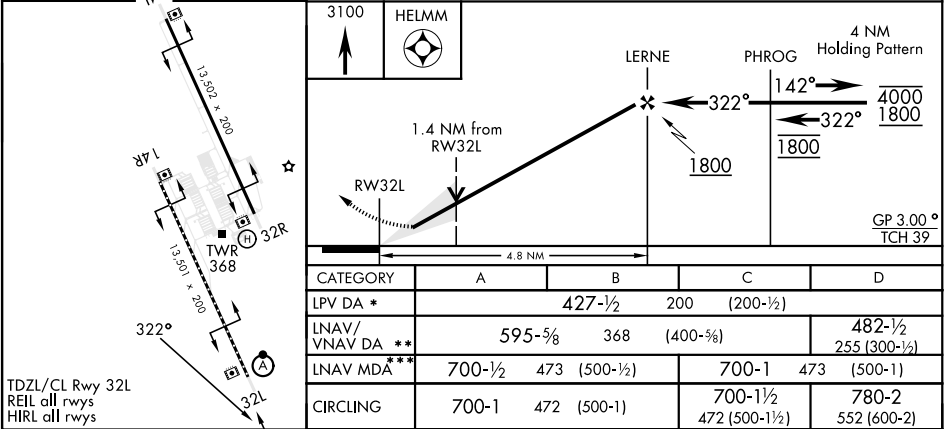
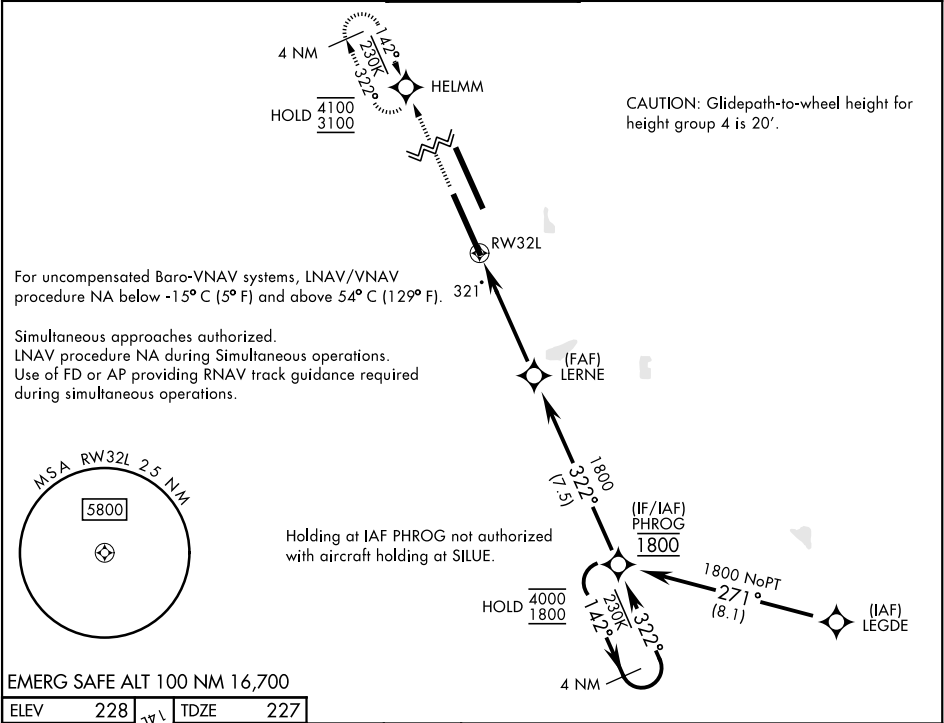
WAAS Chan 50085 W32A	APCH CRS 322°	Rwy Idg 13,501 TDZE 227 Arpt Elev 228
--	-------------------------	--

[USN]

LEMOORE NAS (REEVES FIELD) (KNLC)

RNP APCH - GPS	ALSF-2	MISSED APPROACH: Climb to 3100 direct HELMM and hold.
▼ * When ALS inop, increase vis to ¾ mile. ** When ALS inop, increase vis to 1 mile. *** When ALS inop, increase CAT AB vis to 1 mile, CAT CD vis to 1¾ miles.		

ATIS ★ 121.575 327.15	APP CON 124.1 269.025 (N) 118.15 269.025 (S)	TOWER ★ 128.3 340.2	GND CON 121.65 305.2	CLNC DEL 124.1 371.9	ASR/PAR
---------------------------------	--	-------------------------------	--------------------------------	--------------------------------	---------



RNAV (GPS) RWY 32L

SW-2, 07 AUG 2025 to 04 SEP 2025

SW-2, 07 AUG 2025 to 04 SEP 2025