

RNAV (GPS) RWY 14L

WAAS Chan 70209 W14A	APCH CRS 142°	Rwy Idg 13,502 TDZE 219 Arpt Elev 228
--	-------------------------	--

[USN]

LEMOORE NAS (REEVES FIELD) (KNLC)

RNP APCH-GPS

MISSED APPROACH: Climb to 1200, then climbing left turn to 2000 direct STRAT and hold.

ATIS ★
121.575 327.15

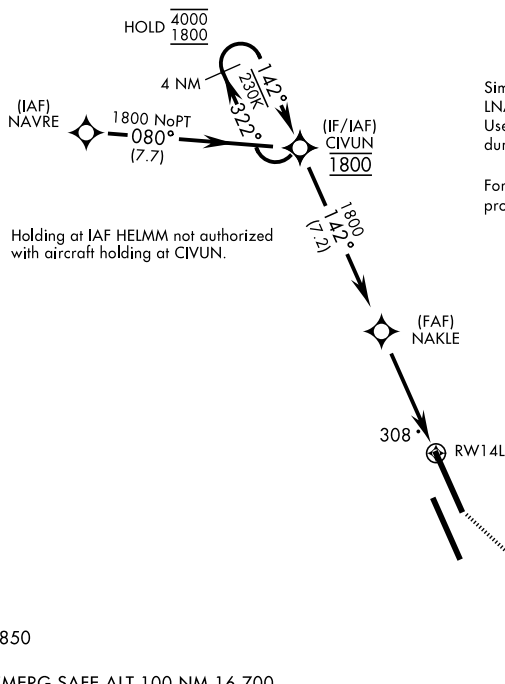
APP CON
124.1 269.025 (N)
118.15 269.025 (S)

TOWER ★
128.3 340.2

GND CON	
121.65	305.2

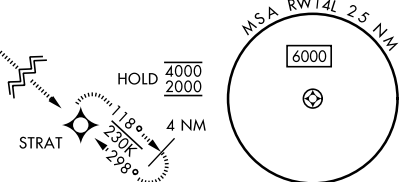
CLNC DEL
124.1 371.9

ASR/PAR



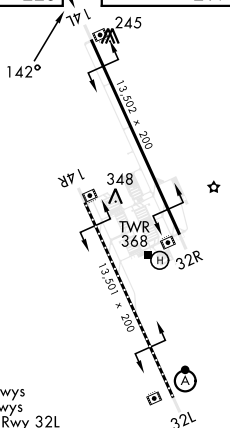
Simultaneous approaches authorized.
LNAV procedure NA during simultaneous operations.
Use of FD or AP providing RNAV track guidance required
during simultaneous operations.

For uncompensated Baro-VNAV systems, LNAV/VNAV procedure NA below -15°C (5°F) and above 54°C (129°F).

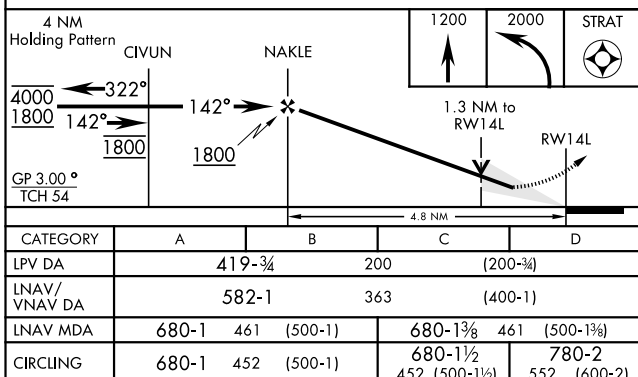


EMERG SAFE ALT 100 NM 16,700

ELEV	228	TDZE	219
------	-----	------	-----



HIRL all rwys
REIL all rwys
TDZL/CL Rwy 32L



LEMOORE, CALIFORNIA

36°20'N-119°57'W

LEMOORE NAS (REEVES FIELD) (KNLC)

RNAV (GPS) RWY 14L

SW-2, 07 AUG 2025 to 04 SEP 2025

SW-2, 07 AUG 2025 to 04 SEP 2025

Amdt 7 12JUN25