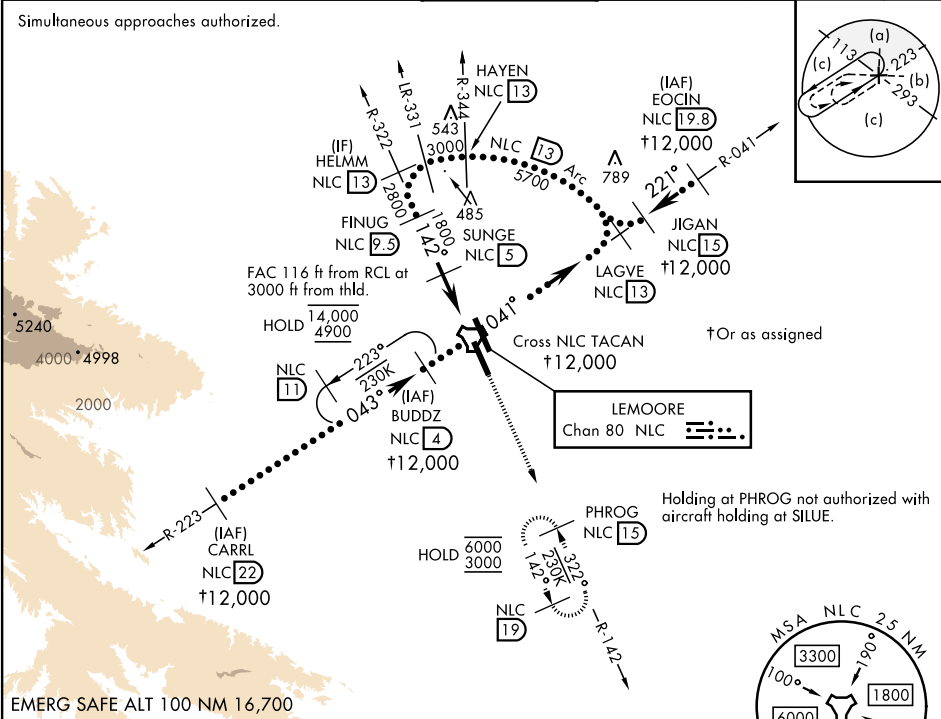


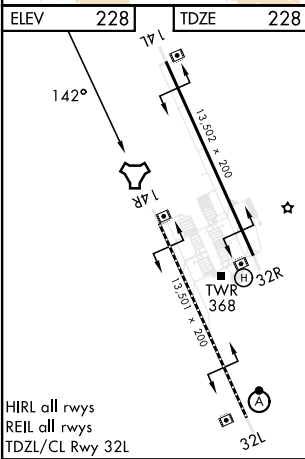
TACAN NLC Chan 80	APCH CRS 142°	Rwy Idg 13,501 TDZE 228 Arpt Elev 228	[USN]	LEMOORE NAS (REEVES FIELD) (KNLC)
----------------------	------------------	---	-------	-----------------------------------

T		MISSED APPROACH: Climb to 3000 via R-142 to PHROG and hold.			
ATIS★ 121.575 327.15	APP CON 124.1 269.025 (N) 118.15 269.025 (S)	TOWER★ 128.3 360.2	GND CON 121.65 305.2	CLNC DEL 124.1 371.9	ASR/ PAR

Simultaneous approaches authorized.



EMERG SAFE ALT 100 NM 16,700



ELEV	228	TDZE	228
CATEGORY	C	D	E
S-14R	680-1½	452	(500-1½)
CIRCLING	680-1½ 452 (500-1½)	780-2 552 (600-2)	800-2 572 (600-2)

SW-2, 07 AUG 2025 to 04 SEP 2025

SW-2, 07 AUG 2025 to 04 SEP 2025