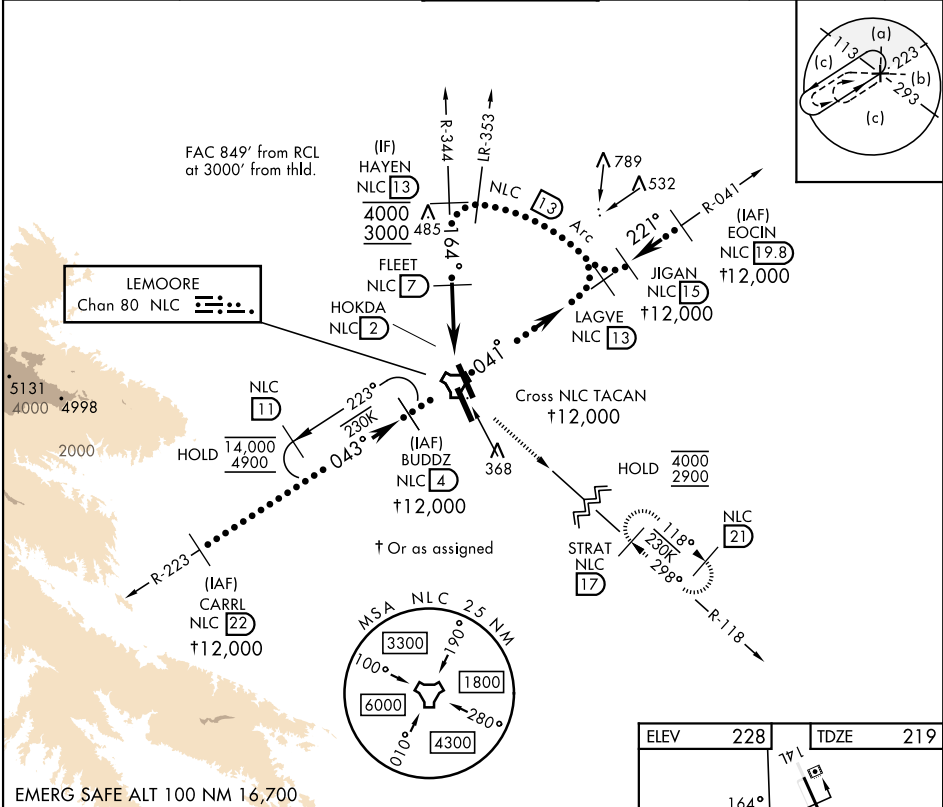


TACAN NLC Chan 80	APCH CRS 164°	Rwy Idg 13,502 TDZE 219 Arpt Elev 228	[USN]	LEMOORE NAS (REEVES FIELD) (KNLC)
----------------------	------------------	---	-------	-----------------------------------

T			MISSED APPROACH: Climb to 700 then climbing left turn to 2900 direct STRAT and hold.		
ATIS★ 121.575 327.15	APP CON 124.1 269.025 (N) 118.15 269.025 (S)	TOWER ★ 128.3 340.2	GND CON 121.65 305.2	CLNC DEL 124.1 371.9	ASR/ PAR



ELEV 228		TDZE 219	
164°		13,502 x 200	
17R		32R	
13,500 x 200		32L	
TWR 368		A	
5 NM		5 NM	
CATEGORY	C	D	E
S-14L	660-1½	441	(500-1½)
CIRCLING	680-1½ 452 (500-1½)	780-2 552 (600-2)	800-2 572 (600-2)

HAYEN NLC 13 4000 3000

FLEET NLC 7

NLC TACAN

HOKDA NLC 2

1900

164°

2.64°

TCH 54

STRAT NLC 17

700 2900

HIRL all rwy's
REIL all rwy's
TDZL/CL Rwy 32L