


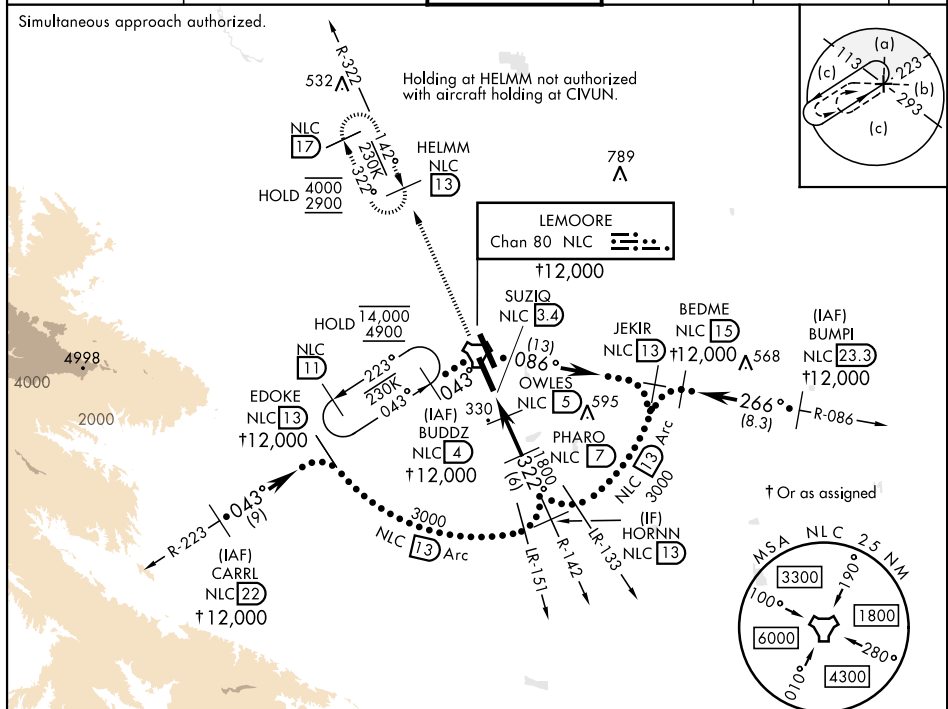
HI-TACAN X RWY 32L

TACAN NLC Chan 80	APCH CRS 322°	Rwy Idg 13,501 TDZE 227 Arpt Elev 228	[USN]	HI-TACAN X RWT SZL LEMOORE NAS (REEVES FIELD) (KNLC)
-----------------------------	-------------------------	--	-------	---

<p>▼ * When ALS inop, increase CAT CDE vis to 1 mile.</p>	<p>ALSF-2</p> 	<p>MISSED APPROACH: Climb to 2900 via NLC TACAN R-142 to NLC, then via NLC R-322 to HELMM and hold.</p>
--	---	--

ATIS★ 121.575 327.15	APP CON 124.1 269.025 (N) 118.15 269.025 (S)	TOWER ★ 128.3 340.2	GND CON 121.65 305.2	CLNC DEL 124.1 371.9	ASR/ PAR
-------------------------	--	------------------------	-------------------------	-------------------------	-------------

Simultaneous approach authorized.



EMERG SAFE ALT 100 NM 16,700

Figure 1: Example of a typical RNAV (RNP) approach chart. The chart displays a 3D perspective view of the approach path, including the final approach segment (FAS) and the missed approach segment. Key features include:

- Approach Path:** The path starts at a 3000-foot altitude and descends to a 1800-foot altitude, then continues to a 1080-foot altitude. The path is defined by a 3.38° TCH 48° angle.
- Obstacles:** Obstacles are shown as circles with their MSL altitudes: 2900, 2700, 2500, 2300, 2100, 1900, 1700, 1500, 1300, 1100, 900, 700, 500, 300, 100, and 0.
- Navigation Aids:** The chart includes NLC (Non-Linear Course) and HELMM (Helicopter Minimums) information. The NLC is labeled "NLC R-142" and "NLC R-322". The HELMM is labeled "HELMM NLC 13".
- Category and Altitude:** The chart is categorized as "CATEGORY C" and "D". The altitude is "580-5/6" and "353 (400-5/6)".
- Missed Approach:** The missed approach segment is shown as a dashed line starting from the 1080-foot altitude and ascending to a 1800-foot altitude. The path is defined by a 3.38° TCH 48° angle.
- Obstacle Clearance:** The obstacle clearance is "1.6 NM" and "2 NM".
- Other Information:** The chart includes a "CIRCLING" section with altitudes "680-1 1/2 (500-1 1/2)", "780-2 (600-2)", and "800-2 (600-2)".

LEMOORE, CALIFORNIA

36°20'N-119°57'W

LEMOORE NAS (REEVES FIELD) (KNLC)

Amdt 8 07AUG25

HI-TACAN X RWY 32L