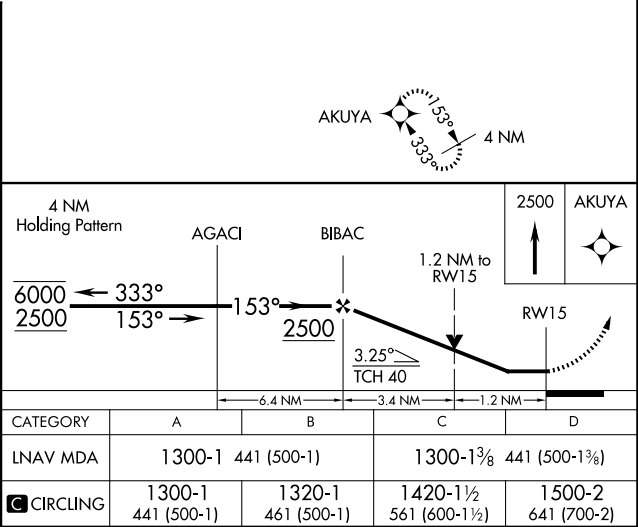
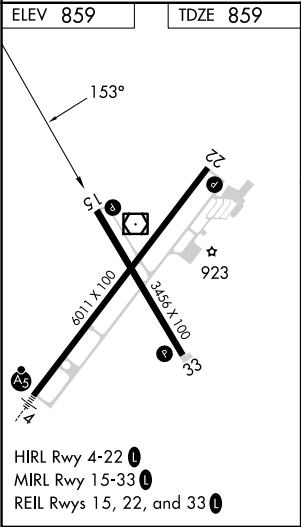
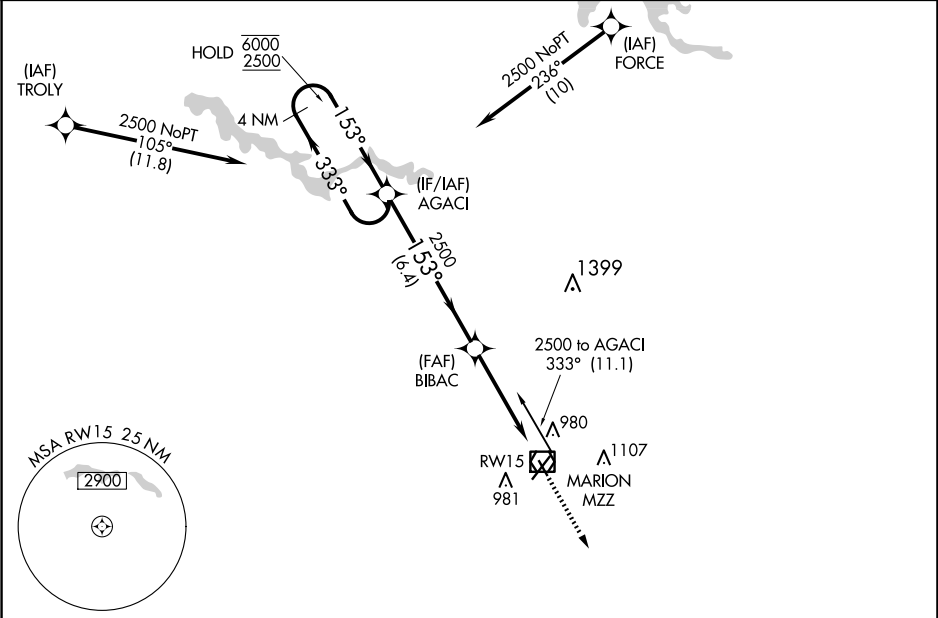


APP CRS	Rwy Idg	3456
153°	TDZE	859
	Apt Elev	859

RNAV (GPS) RWY 15

MARION MUNI - MCKINNEY FLD (MZZ)

RNP APCH - GPS.		MISSED APPROACH: Climb to 2500 direct AKUYA and hold.	
	Rwy 15 helicopter visibility reduction below 3/4 SM NA. Circling Rwy 15 NA at night.		
AWOS-3 108.6	GRISSOM APP CON ★ 121.05 338.275	CLNC DEL 120.0	UNICOM 122.7 (CTAF)



EC-2, 07 AUG 2025 to 04 SEP 2025

EC-2, 07 AUG 2025 to 04 SEP 2025