

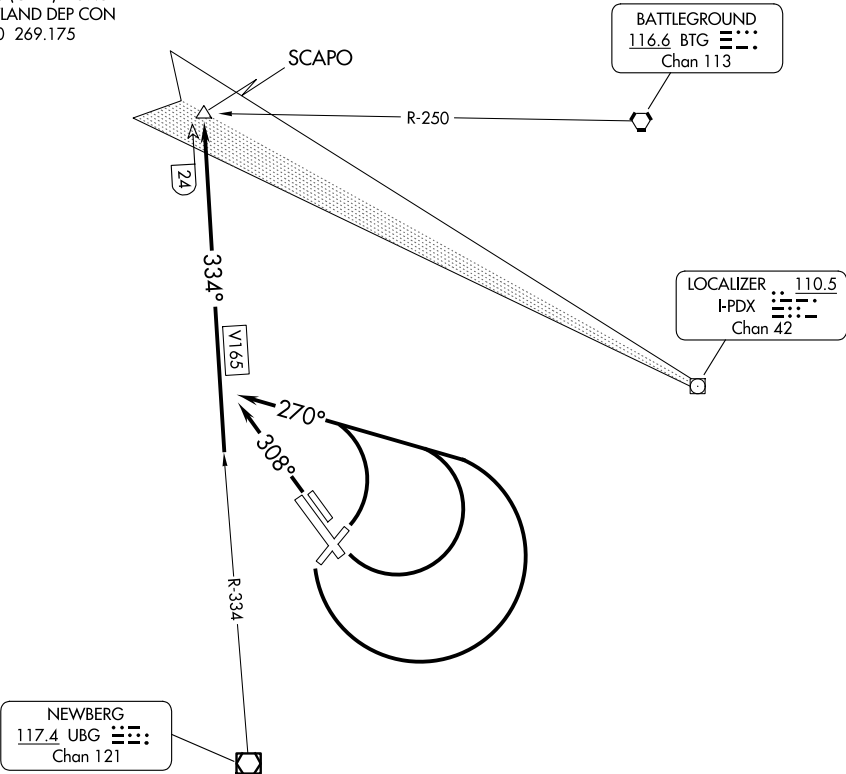
(SCAPO7.SCAPO) 23334  
SCAPO SEVEN DEPARTURE

AL-5063 (FAA)

PORTLAND-HILLSBORO (HIO)  
PORTLAND, OREGON

ATIS  
127.65  
GND CON  
121.7  
HILLSBORO TOWER ★  
119.3 (CTAF) 239.3  
PORTLAND DEP CON  
126.0 269.175

TOP ALTITUDE:  
ASSIGNED BY ATC



TAKEOFF MINIMUMS

Rwy 2: Standard with minimum climb of 235' per NM to 2000.  
Rwys 13L/R: Standard with minimum climb of 305' per NM to 2700.  
Rwy 20: Standard.  
Rwys 31L/R: Standard with minimum climb of 240' per NM to 600.

NOTE: Chart not to scale.



DEPARTURE ROUTE DESCRIPTION

TAKEOFF RUNWAYS 2, 13L/R, 20: Climbing left turn heading 270°, thence . . . .  
TAKEOFF RUNWAYS 31L/R: Climb heading 308°, thence . . . .  
. . . . intercept UBG VOR/DME R-334 to SCAP07. Then on assigned route.  
Maintain ATC assigned altitude.

SCAPO SEVEN DEPARTURE  
(SCAPO7.SCAPO) 01FEB18

PORTLAND, OREGON  
PORTLAND-HILLSBORO (HIO)

NW-1, 07 AUG 2025 to 04 SEP 2025

NW-1, 07 AUG 2025 to 04 SEP 2025