

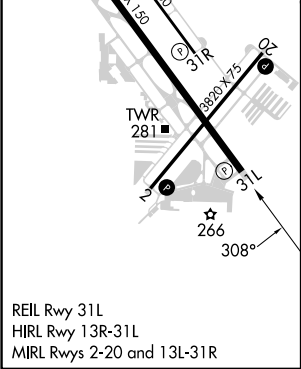
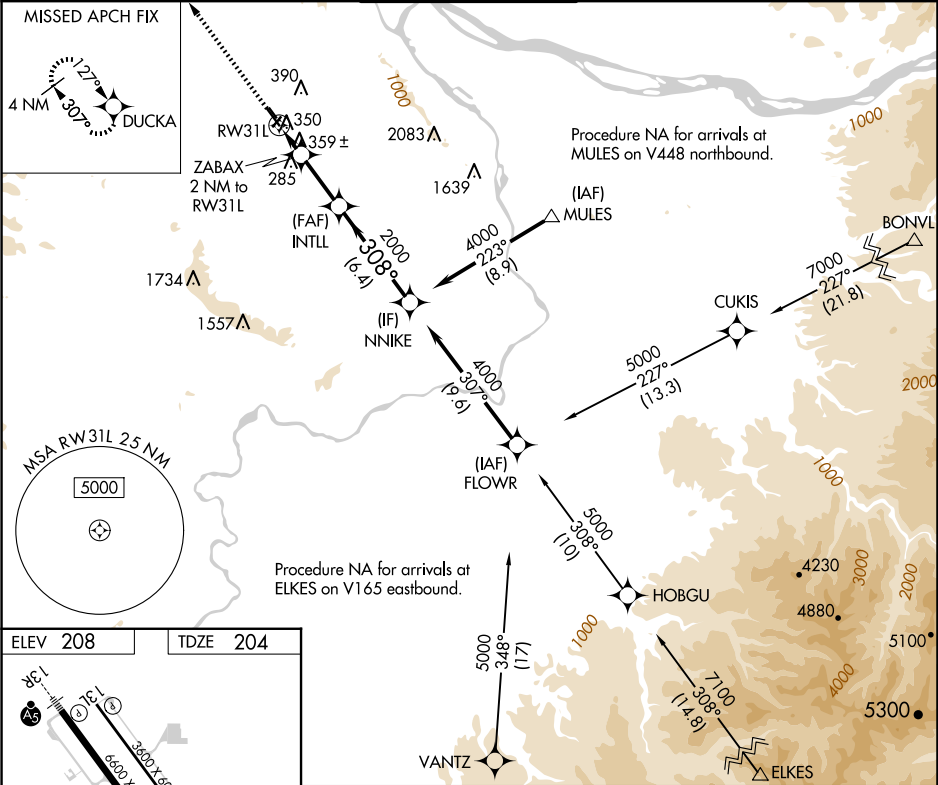
APP CRS	Rwy Idg	6600
308°	TDZE	204
	Apt Elev	208

RNAV (GPS) RWY 31L

PORTLAND-HILLSBORO (HIO)

RNP APCH.	MISSED APPROACH: Climb to 3900 direct DUCKA and hold.
<div><div></div><div>Circling to Rwy 13L, 31R NA at night. Rwy 31L helicopter visibility reduction below ¾ SM NA.</div></div>	

ATIS 127.65	PORTLAND APP CON 126.0 269.175	HILLSBORO TOWER ★ 119.3 (CTAF) 239.3	GND CON 121.7	UNICOM 122.95
----------------	-----------------------------------	---	------------------	------------------



3900 ↑ DUCKA ✦		NNIKE			
RW31L		ZABAX 2 NM to RW31L		INTLL	
1.3 NM to RW31L		880		2000	
3.05° TCH 52		308°			
1.3 NM		0.7		3.4 NM	
6.4 NM					
CATEGORY	A		B		C
LNAV MDA	660-1		456 (500-1)		660-1 <sup>3</sup> / <sub>8</sub> 456 (500-1 <sup>3</sup> / <sub>8</sub> )
CIRCLING	680-1 472 (500-1)		720-1 512 (600-1)		720-1 <sup>1</sup> / <sub>2</sub> 512 (600-1 <sup>1</sup> / <sub>2</sub> )
					980-2 <sup>1</sup> / <sub>2</sub> 772 (800-2 <sup>1</sup> / <sub>2</sub> )