

WAAS CH 69502 W13A	APP CRS 127°	Rwy Idg 6600 TDZE 203 Apt Elev 208
--	------------------------	---

RNAV (GPS) RWY 13R
PORTLAND-HILLSBORO (HIO)

RNP APCH.

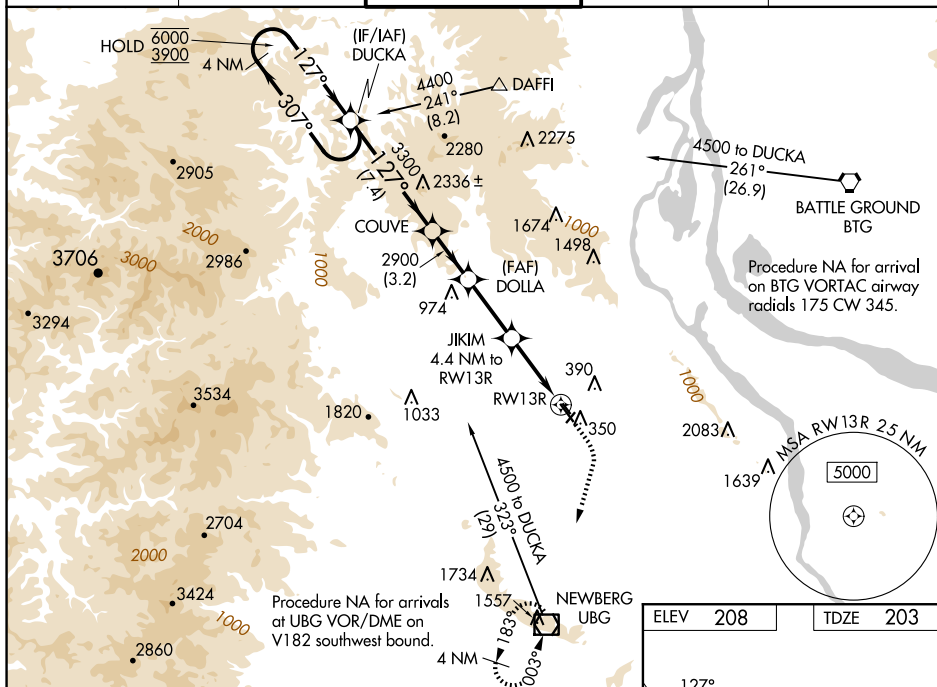
- T** Circling to Rwy 13L-31R NA at night. For uncompensated Baro-VNAV systems, LNAV/VNAV NA below -18°C or above 54°C. For inop ALS, increase LNAV Cat A/B visibility to RVR 5500 and Cat C/D to 1 3/8 SM.
A #RVR 1800 authorized with use of FD or AP or HUD to DA.

MALSR



MISSED APPROACH: Climb to 1000 then climbing right turn to 3000 direct UBG VOR/DME and hold. Continue climb-in-hold to 3000.

ATIS 127.65	PORTLAND APP CON 126.0 269.175	HILLSBORO TOWER ★ 119.3 (CTAF) 0 239.3	GND CON 121.7	UNICOM 122.95
----------------	-----------------------------------	---	------------------	------------------



4 NM Holding Pattern

DUCKA

COUVE

DOLLA

6000 ← 307°

3900 → 127°

127°

3300

2900

*1660

JIKIM

4.4 NM to RW13R

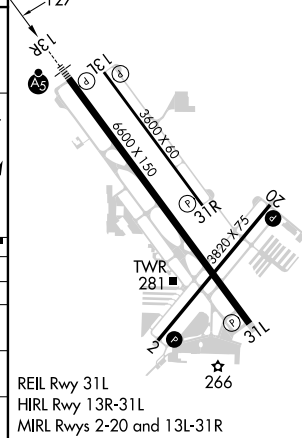
*1.3 NM to RW13R

*RNAV only.

GP 3.00°

TCH 48

CATEGORY	A	B	C	D
LPV DA#		403/24	200 (200-½)	
LNNAV/ VNAV		661/45	458 (500-¾)	
LNNAV MDA	660/40	457 (500-¾)	660/50	457 (500-1)
CIRCLING	680-1 472 (500-1)	720-1 512 (600-1)	720-1½ 512 (600-1½)	980-2½ 772 (800-2½)



RNAV (GPS) RWY 13R