

WAAS CH <b>40312</b> <b>W20A</b>	APP CRS <b>203°</b>	Rwy Ldg <b>6005</b> TDZE <b>418</b> Apt Elev <b>433</b>
--	------------------------	---

RNAV (GPS) RWY 20

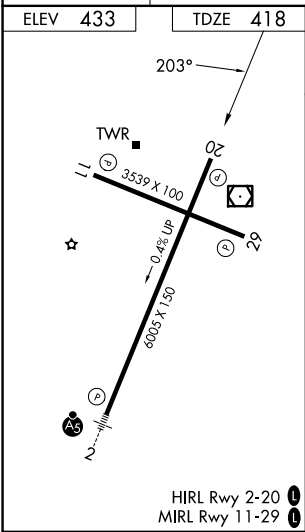
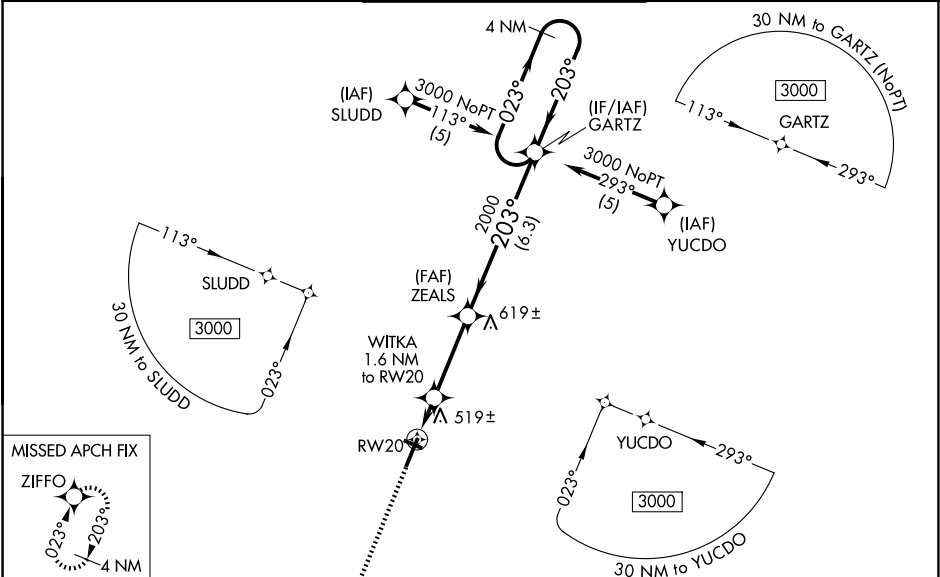
JACKSON RGNL (MKL)

RNP APCH - GPS

▼ Rwy 20 helicopter visibility reduction below ¾ SM NA. For uncompensated Baro-VNAV systems, LNAV/VNAV NA below -15°C or above 48°C. Baro-VNAV NA when using Dyersburg altimeter setting. When local altimeter setting not received, use Dyersburg altimeter setting: increase LPV DA to 802 feet and visibility all Cats ½ SM; increase LNAV/VNAV DA to 910 feet and visibility all Cats ¼ SM; increase all MDA 100 feet and visibility LNAV Cat C and D and Circling Cat C ¼ SM, and Circling Cat D ½ SM.

MISSED APPROACH:  
Climb to 3000 direct  
ZIFFO and hold.

ASOS <b>119.325</b>	MEMPHIS CENTER <b>134.65 316.15</b>	JACKSON TOWER ★ <b>127.15</b> (CTAF) <b>0 249.95</b>	GND CON <b>120.9</b>	UNICOM <b>122.95</b>
------------------------	--	---	-------------------------	-------------------------



ELEV 433	TDZE 418
3000	ZIFFO
VGSI and RNAV glidepath not coincident (VGSI Angle 3.00/TCH 46).	
* LNAV only	WITKA 1.6 NM to RW20
ZEALS	
RW20	
*960	
2000	
1.6 NM 3.2 NM 6.3 NM	
CATEGORY	A B C D
LPV DA	710-1 292 (300-1)
LNAV/VNAV DA	818-1½ 400 (400-1½)
LNAV MDA	780-1 362 (400-1) 780-1¼ 362 (400-1¼)
CIRCLING	900-1 467 (500-1) 920-1 487 (500-1) 960-1½ 527 (600-1½) 1100-2 667 (700-2)

SE-1, 07 AUG 2025 to 04 SEP 2025

SE-1, 07 AUG 2025 to 04 SEP 2025