

WAAS CH 93511 W02A	APP CRS 023°	Rwy Ldg 6005 TDZE 433 Apt Elev 433
--	------------------------	---

RNAV (GPS) RWY 2
JACKSON RGNL (MKL)

RNP APCH - GPS.

T For uncompensated Baro-VNAV systems, LNAV/VNAV NA below -15°C or above 48°C.
A For inop ALS, increase visibility LNAV Cats A/B to 1 SM, and Cats C/D to 1 3/8 SM.

MALSR



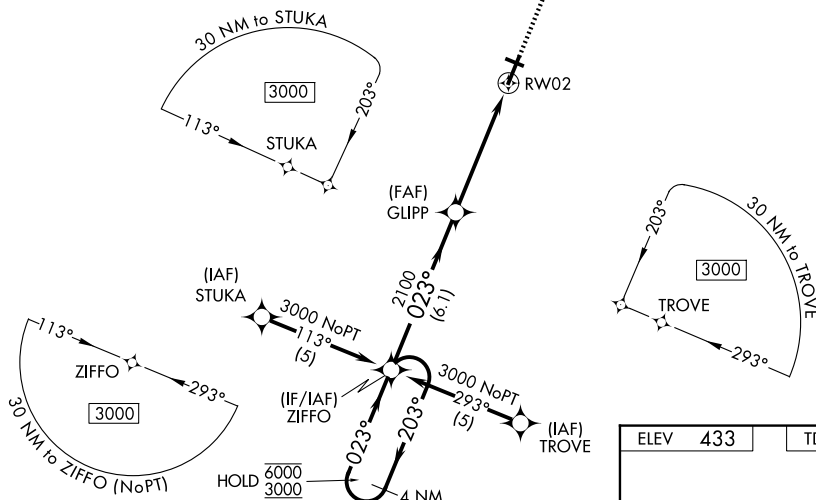
MISSED APPROACH:
Climb to 3000 direct
GARTZ and hold.

ASOS
119,325

MEMPHIS CENTER
134.65 316.15

JACKSON TOWER ★
127.15 (CTAF) **L** 249.95

GND CON
120.9

UNICOM
122.95

MISSED APCH FIX

4 NM -



GARTZ

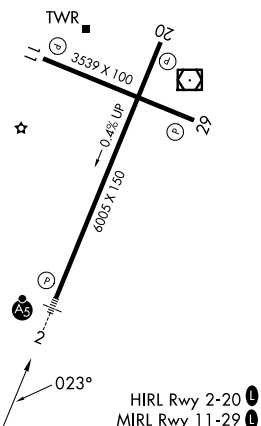
ELEV	433		TDZE	433
------	-----	--	------	-----

4 NM	VGSI and RNAV glidepath not coincident
Holding Pattern	(VGSI Angle 3.00/TCH 57).

Holding Pattern ZIGZAG
 6000 ← 203°
 3000 ————— 023° →

$$\frac{\text{GP } 3.04^\circ}{\text{TCH } 59}$$

CATEGORY		A	B	C	D
LPV	DA	772- ³ / ₄ 339 (400- ³ / ₄)			
LNAV/ VNAV	DA	886- ⁷ / ₈ 453 (500- ⁷ / ₈)			
LNAV	MDA	900- ³ / ₄ 467 (500- ³ / ₄)	900-1 467 (500-1)		
CIRCLING		900-1 467 (500-1)	920-1 487 (500-1)	960-1 ¹ / ₂ 527 (600-1 ¹ / ₂)	1080-2 647 (700-2)



JACKSON, TENNESSEE

Orig-C 19MAY22

35°36'N-88°55'W

JACKSON RGNL (MKL)

RNAV (GPS) RWY 2

SE-1, 07 AUG 2025 to 04 SEP 2025

SE-1, 07 AUG 2025 to 04 SEP 2025