

WAAS CH <b>93641</b> <b>W17A</b>	APP CRS <b>167°</b>	Rwy Idg TDZE Apt Elev	<b>8002</b> <b>2164</b> <b>2164</b>
--	------------------------	-----------------------------	---

RNAV (GPS) RWY 17

ASHEVILLE RGNL (AVL)

RNP APCH.

▼

▲

Circling NA west of Rwy 17-35. For uncompensated Baro-VNAV systems, LNAV/VNAV NA below -13°C or above 54°C. For inop ALS, increase LNAV/VNAV all Cats visibility to 2½ SM and increase LNAV Cats C/D visibility to 2 SM.

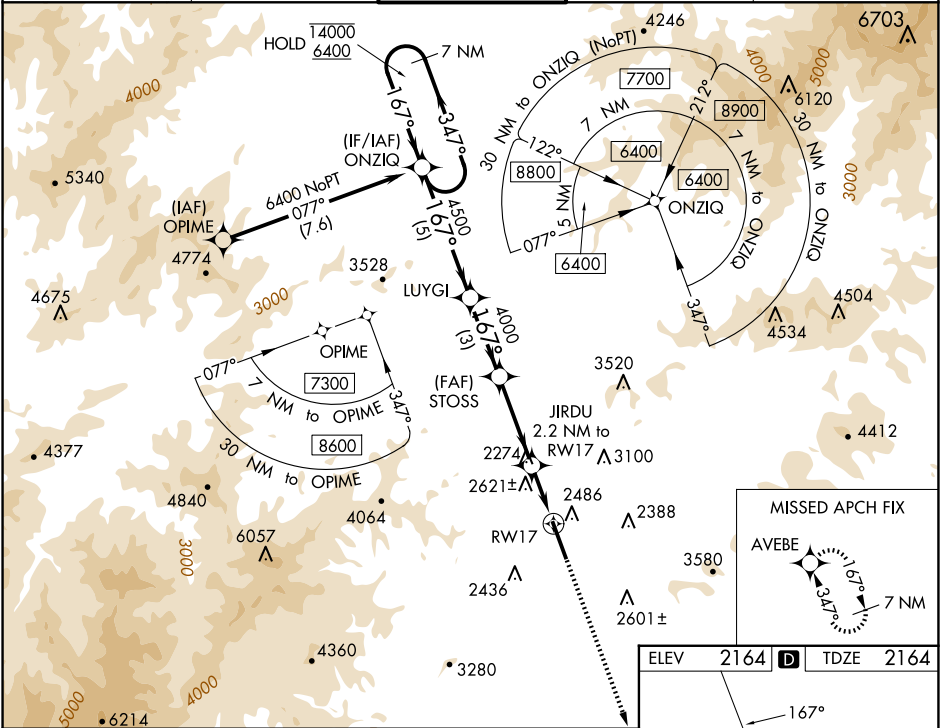
MALSR

AS

AS

MISSED APPROACH: Climb to 6200 direct AVEBE and hold, continue climb-in-hold to 6200.

ATIS <b>120.2</b>	ASHEVILLE APP CON* <b>124.65 351.8</b>	ASHEVILLE TOWER* <b>121.1 (CTAF) 0 257.8</b>	GND CON <b>121.9</b>	UNICOM <b>122.95</b>
----------------------	---	---	-------------------------	-------------------------



7 NM Holding Pattern				ONZIQ		LUYGI		STOSS		JIRDU		6200		AVEBE	
14000 ← 347°				167° →		167°		4000		2.2 NM to RW17		*LNAV only.			
6400				4500		4000		*2920		RW17					
GP 3.00°				TCH 55		5 NM		3 NM		3.4 NM		2.2 NM			
CATEGORY		A		B		C		D							
LPV DA				2364-½		200 (200-½)									
LNAV/VNAV DA				2960-1¾		796 (800-1¾)									
LNAV MDA		2880-½		716 (800-½)		2880-1⅝		716 (800-1⅝)							
CIRCLING		2880-1		716 (800-1)		3460-3		3720-3							
						1296 (1300-3)		1556 (1600-3)							

