

LOC/DME I-AVL	APP CRS	Rwy Idg TDZE	8002 2141
110.5	347°	Apt Elev	2164
Chan 42			

ILS or LOC RWY 35

ASHEVILLE RGNL (AVL)

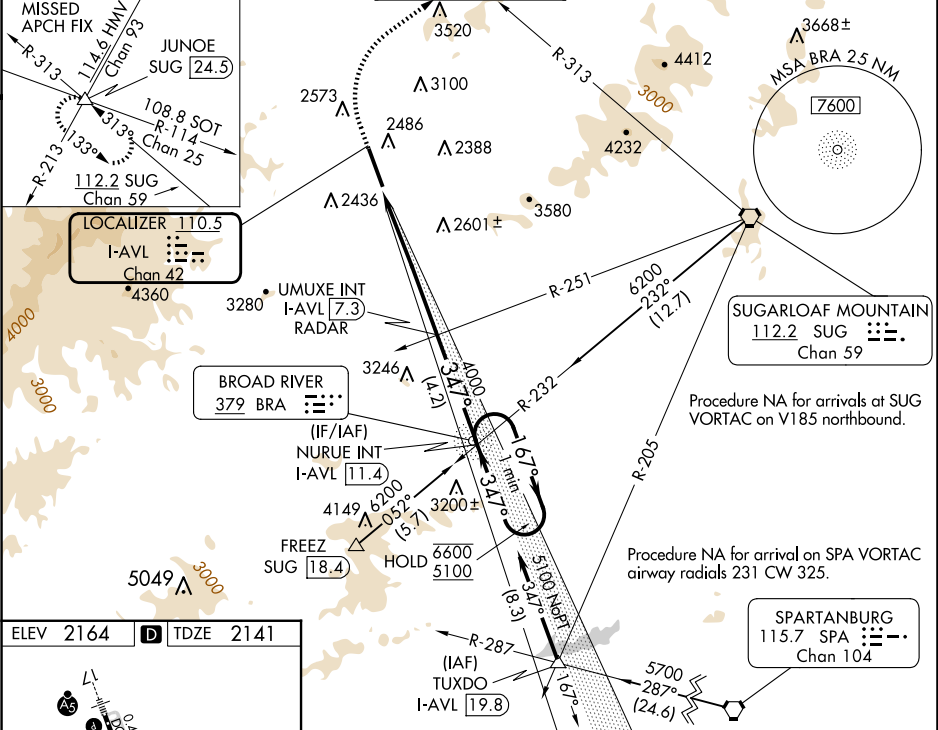
▼
▲

Circling NA west of Rwy 17-35.

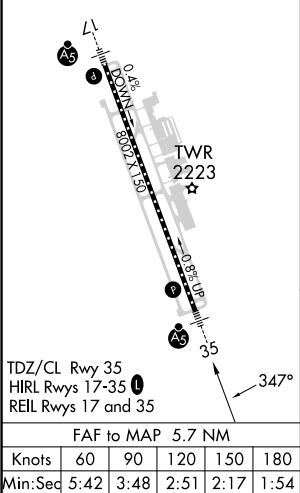
MALSR

MISSED APPROACH: Climb to 2700 then climbing right turn to 6800 on heading 020° and on SUG VORTAC R-313 to JUNOE INT/SUG 24.5 DME and hold, continue climb-in-hold to 6800.
* Missed approach requires minimum climb of 340 feet per NM to 4200.

ATIS 120.2	ASHEVILLE APP CON ★ 124.65 351.8	ASHEVILLE TOWER ★ 121.1 (CTAF) 0 257.8	GND CON 121.9	UNICOM 122.95
---------------	-------------------------------------	-------------------------------------------	------------------	------------------



ELEV 2164	D	TDZE 2141
-----------	---	-----------



2700	6800	SUG R-313	JUNOE	UMUXE INT I-AVL 7.3	NURUE INT I-AVL 11.4	One Minute Holding Pattern
3.2 NM	2.5 NM	4.2 NM				
CATEGORY	A	B	C	D		
S-ILS 35*	2360/24		219 (200-1/2)			
S-ILS 35	3019-4		878 (900-4)			
S-LOC 35	3200/40 1059 (1100-3/4)	3200/55 1059 (1100-1)	3200-2 1/2	1059 (1100-2 1/2)		
● CIRCLING	3200-1 1/4 1036 (1100-1 1/4)	3200-1 1/2 1036 (1100-1 1/2)	3460-3 1296 (1300-3)	3720-3 1556 (1600-3)		