

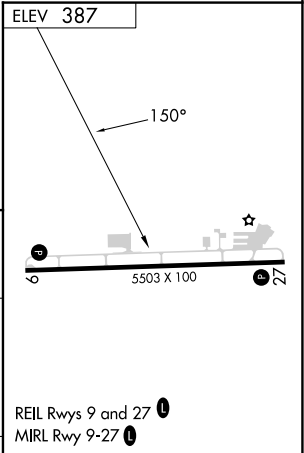
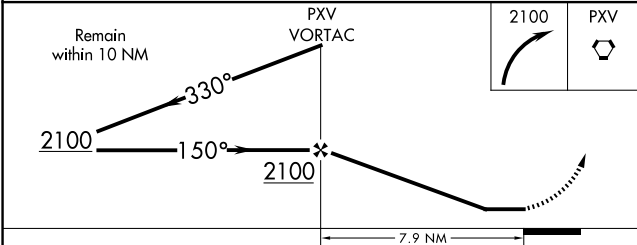
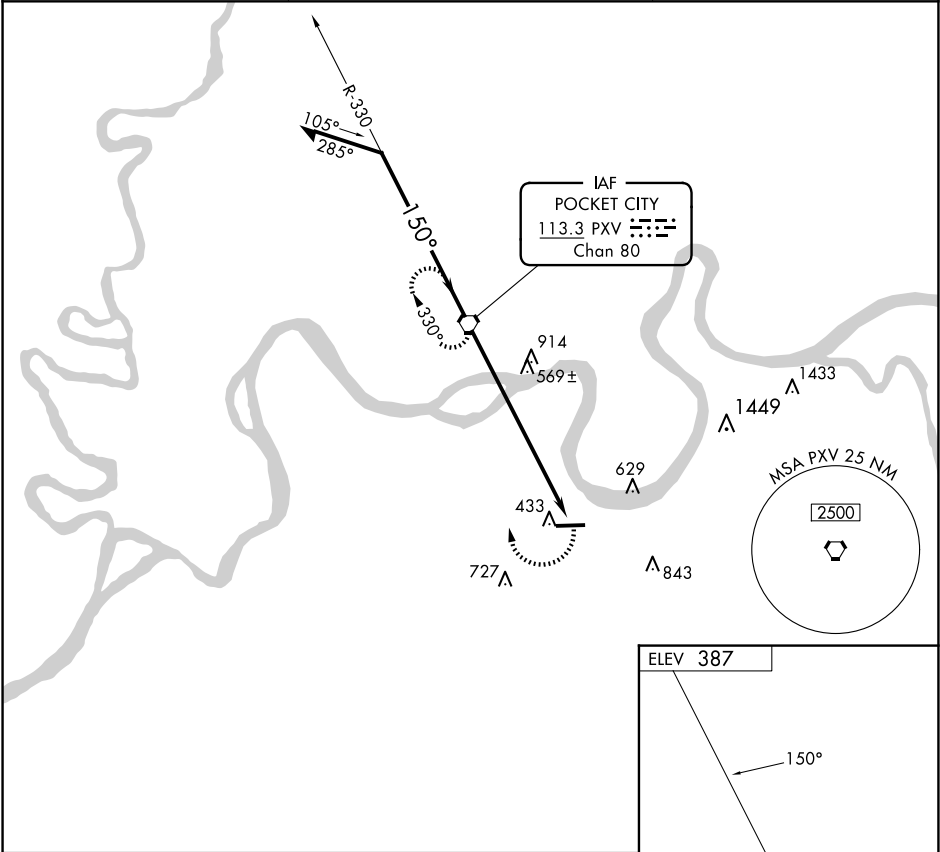
▼

▲ NA

When local altimeter setting not received, use Evansville altimeter setting and increase all MDAs 80 feet, and increase Circling Cts C/D visibility ¼ SM.

MISSED APPROACH: Climbing right turn to 2100 direct PXV VORTAC and hold.

AWOS-3PT 118.85	EVANSVILLE APP CON ★ 124.025 257.8	UNICOM 122.8 (CTAF) 0
--------------------	---------------------------------------	--------------------------



CATEGORY	A	B	C	D	FAF to MAP 7.9 NM					
CIRCLING	920-1	533 (600-1)	1040-1¾	1200-2¾	Knots	60	90	120	150	180
			653 (700-1¾)	813 (900-2¾)	Min:Sec	7:54	5:16	3:57	3:10	2:38