

WAAS CH 77909 W27A	APP CRS 269°	Rwy Idg TDZE Apt Elev	5503 387 387
--	------------------------	-----------------------------	---

RNAV (GPS) RWY 27

HENDERSON CITY-COUNTY (EHR)

RNP APCH.

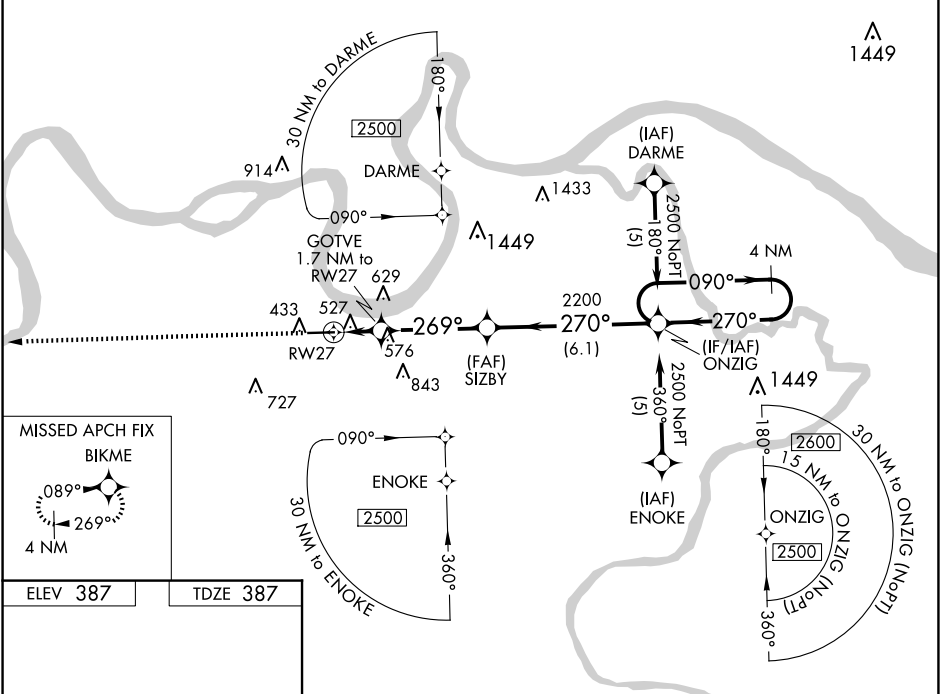
▼

⚠

Baro-VNAV NA when using Evansville altimeter setting. For uncompensated Baro-VNAV systems, LNAV/VNAV NA below -15°C or above 48°C. Rwy 27 helicopter visibility reduction below ¾ SM NA. When local altimeter setting not received, use Evansville altimeter setting and increase all DA 41 feet and all MDA 60 feet and LPV all Cats, LNAV/VNAV all Cats and LNAV Cats C/D visibilities ¼ mile.

MISSED APPROACH: Climb to 2500 direct BIKME and hold.

AWOS-3PT 118.85	EVANSVILLE APP CON ★ 124.025 257.8	UNICOM 122.8 (CTAF) 📶
---------------------------	--	--



ELEV 387

TDZE 387

2500

BIKME

*LNAV only

GOTVE 1.7 NM to RW27

RW27

269°

960*

2200

270°

ONZIG

4 NM Holding Pattern

090°

2500

GP 3.00°

TCH 40

CATEGORY	A	B	C	D
LPV DA	733-1¼ 346 (400-1¼)			
LNAV/VNAV DA	827-1½ 440 (500-1½)			
LNAV MDA	840-1	453 (500-1)	840-1⅔ 453 (500-1⅔)	840-1½ 453 (500-1½)

REIL Rwy 9 and 27 **📶**

MIRL Rwy 9-27 **📶**