

WAAS CH 99303 W20A	APP CRS 201°	Rwy Ldg 8000 TDZE 871 Apt Elev 871
--	------------------------	---

RNAV (GPS) RWY 20

CENTRAL IL RGNL/BLOOMINGTON-NORMAL (BMI)

RNP APCH - GPS.

▼

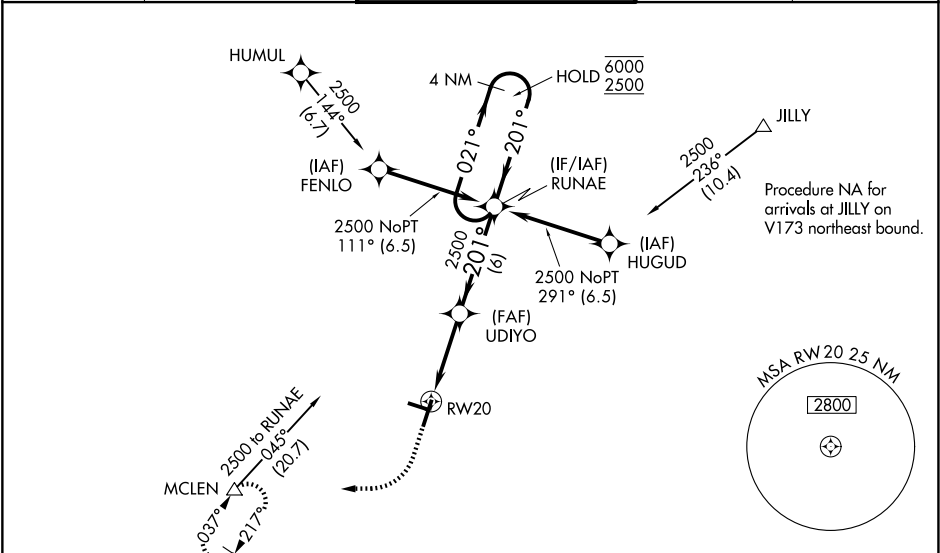
▲


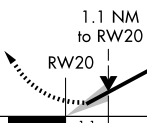
For uncompensated Baro-VNAV systems, LNAV/VNAV NA below -20°C or above 54°C. Baro-VNAV and VDP NA when using PIA altimeter setting. When local altimeter setting not received, use PIA altimeter setting: increase LPV DA to 1187 feet and all visibilities to RVR 2400; increase LNAV/VNAV DA to 1417 feet and all visibilities to RVR 6000; increase all MDAs 120 feet and LNAV visibility Cat C and D to RVR 5500 and Circling visibility Cat C and D ¼ SM. For inop ALS, increase LNAV Cat C and D visibility to RVR 6000. For inop ALS when using PIA altimeter setting, increase LPV all Cats visibility to RVR 4500.

ALS F-2

MISSED APPROACH:
Climb to 1500 then climbing right turn to 3000 direct MCLEN and hold.

ATIS 119.575	SAINT LOUIS APP CON 128.725 256.9	BLOOMINGTON TOWER ★ 124.6 (CTAF) 269.575	GND CON 121.65	UNICOM 122.95
------------------------	---	--	--------------------------	-------------------------



				
1500 ↑	3000 ↗	MCLEN △		
		UDIYO 2500		
1.1 NM to RW20		RUNAE 4 NM Holding Pattern		
RW20		201° ← 201°		
1.1		2500 GP 3.00° TCH 58		
3.8 NM		6 NM		
CATEGORY	A	B	C	D
LPV DA	1071/18 200 (200-½)			
LNAV/VNAV DA	1301/40 430 (500-¾)			
LNAV MDA	1280/24 409 (500-½)	1280/40 409 (500-¾)		
CIRCLING	1340-1 469 (500-1)	1620-2¼ 749 (800-2¼)	1620-2½ 749 (800-2½)	

