

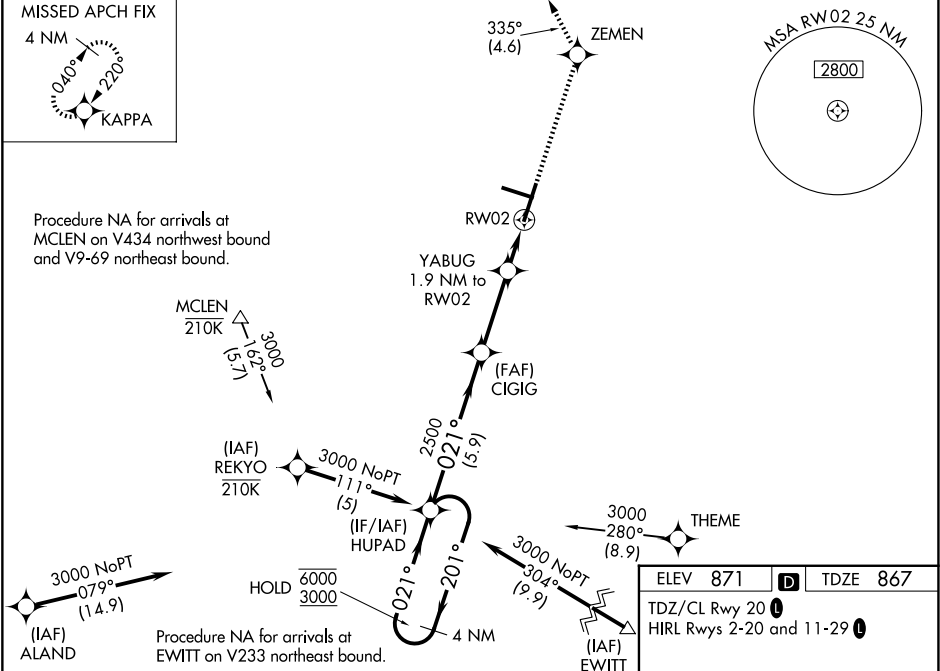


|  |                        |   |
|--|------------------------|---|
| WAAS<br>CH <b>56303</b><br><b>W02A</b> | APP CRS<br><b>021°</b> | Rwy Ldg <b>8000</b><br>TDZE <b>867</b><br>Apt Elev <b>871</b> |
|--|------------------------|---|

RNAV (GPS) RWY 2

CENTRAL IL RGNL/BLOOMINGTON-NORMAL (BMI)

|  |   |  |                                      |  |  |
|--|---|--|--------------------------------------|--|--|
| RNP APCH - GPS.  |   |  |                                      | <div>MALSR</div> <div></div> <div></div> | <div>MISSED APPROACH:</div> <div>Climb to 3000 direct ZEMEN and on track 335° to KAPPA and hold, continue climb-in-hold to 3000.</div> |
| <div><div><div>▼</div><div>▲</div></div><div>For uncompensated Baro-VNAV systems, LNAV/VNAV NA below -21°C or above 54°C. Baro-VNAV and VDP NA when using PIA altimeter setting. Inop table does not apply to LPV. For inop ALS, increase LNAV/VNAV all Cats visibility to RVR 6000 and LNAV Cats C and D visibility to RVR 6000. When local altimeter setting not received, use PIA altimeter setting: increase LPV DA to 1183 feet; increase LNAV/VNAV DA to 1376 feet and all Cats visibility to RVR 5500; increase all MDAs 120 feet and Circling visibility Cats C and D ¼ SM. For inop ALS when using PIA altimeter setting; increase LNAV/VNAV all Cats visibility to 1 ½ SM and increase LNAV Cats C and D visibility to 1 ¾ SM.</div></div> |   |  |                                      |  |  |
| <div>ATIS</div> <div>119.575</div>   | <div>SAINT LOUIS APP CON</div> <div>128.725 256.9</div> | <div>BLOOMINGTON TOWER ★</div> <div>124.6 (CTAF) 0 269.575</div> | <div>GND CON</div> <div>121.65</div> | <div>UNICOM</div> <div>122.95</div>  |  |



|  |        |             |                         |                         |       |
|--|--------|-------------|-------------------------|-------------------------|-------|
| VGSI and RNAV glidepath not coincident (VGSI Angle 3.00/TCH 75). |        | 3000        | ZEMEN                   | tr 335°                 | KAPPA |
| 4 NM Holding Pattern HUPAD                                       |        | 3000        | YABUG 1.9 NM to RW02    | 1 NM to RW02            | RW02  |
| 6000 ← 201°<br>3000 → 021°                                       |        | 2500        | 1520                    |                         |       |
| GP 3.00° TCH 55  |        | 5.9 NM      | 3.1 NM                  | 0.9 NM                  | 1 NM  |
| CATEGORY   | A      | B           | C                       | D                       |       |
| LPV DA   |        | 1067/40     | 200 (200-¾)             |                         |       |
| LNAV/VNAV DA   |        | 1260/40     | 393 (400-¾)             |                         |       |
| LNAV MDA   |        | 1260/40     | 393 (400-¾)             |                         |       |
| CIRCLING   | 1340-1 | 469 (500-1) | 1620-2¼<br>749 (800-2¼) | 1620-2½<br>749 (800-2½) |       |