

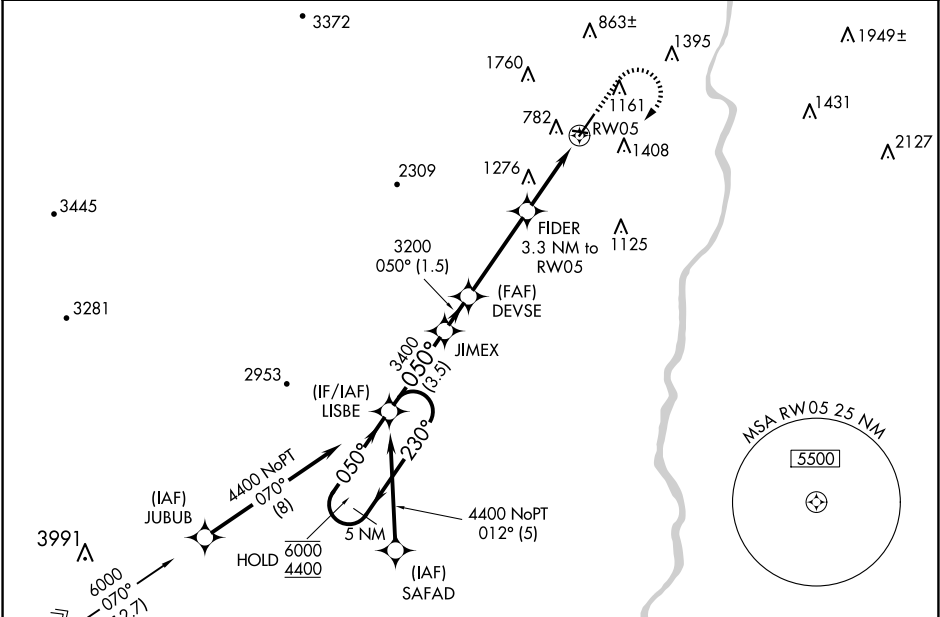
APP CRS	Rwy Idg	5501
050°	TDZE	575
	Apt Elev	578

RNAV (GPS) RWY 5

HARTNESS STATE (SPRINGFIELD) (VSI¹)

RNP APCH - GPS.	MISSED APPROACH: Climb to 2100 then climbing right turn to 4400 direct LISBE and hold.
<div><div>▼</div><div>⚠</div><div>❄</div></div> <div>Rwy 5 helicopter visibility reduction below ¾ SM NA. Circling Rwy 11, 23, 29 NA at night. When local altimeter setting not received, use LEB altimeter setting and increase all MDAs 60 feet. VDP NA when using LEB altimeter setting.</div>	

ASOS 121.425	BOSTON CENTER 134.7 269.475	UNICOM 122.8 (CTAF) 0
-----------------	--------------------------------	--------------------------



5 NM Holding Pattern		VGSI and descent angles not coincident (VGSI Angle 4.00/TCH 59).		2100	4400	LISBE
6000 ← 230°		JIMEX		↑	↘	✦
4400 → 050°		DEVSE				
*1900 when using LEB altimeter setting.		FIDER				
		3.3 NM to RW05				
		2.7 NM to RW05				
		0.6 NM				
		2.7				
CATEGORY	A	B	C	D		
LNAV MDA	1780-1¼ 1205 (1300-1¼)	1780-1½ 1205 (1300-1½)	1780-3 1205 (1300-3)			
CIRCLING	1780-1¼ 1202 (1300-1¼)	1780-1½ 1202 (1300-1½)	2600-3 2022 (2100-3)			