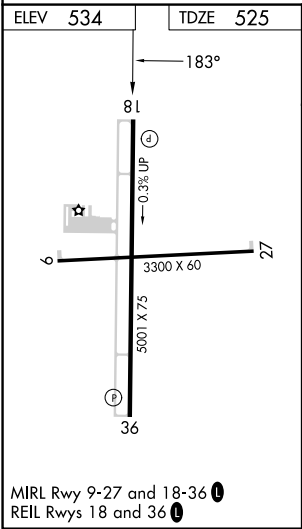
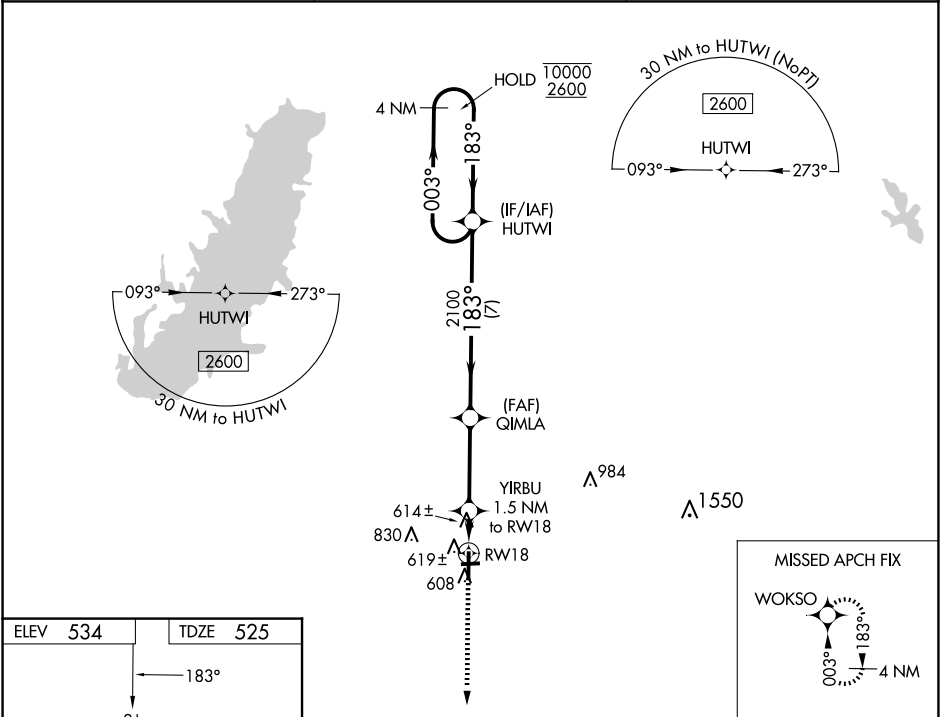




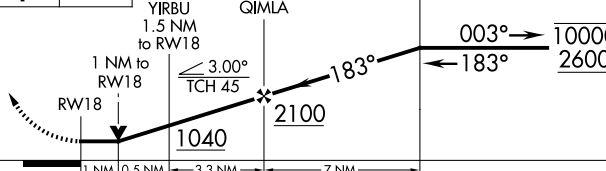
WAAS CH 77728 W18A	APP CRS 183°	Rwy Idg TDZE Apt Elev	5001 525 534
--	------------------------	-----------------------------	---

RNAV (GPS) RWY 18

CENTRALIA MUNI (ENL)

RNP APCH.		MISSED APPROACH: Climb to 2600 direct WOKSO and hold.
T Rwy 18 helicopter visibility reduction below ¾ SM NA. Circling Rwy 9, 27 NA at night.		
AWOS-3PT 121.125	KANSAS CITY CENTER 127.7 351.825	UNICOM 122.8 (CTAF) 0



2600		WOKSO				HUTWI		4 NM Holding Pattern	
									
		YIRBU 1.5 NM to RW18		QIMLA				003° → 10000 ← 183° 2600	
		1 NM to RW18		3.00° TCH 45°		183°			
		RW18		1040		2100			
		1 NM 0.5 NM 3.3 NM 7 NM							
CATEGORY		A		B		C		D	
LP MDA				880-1		355 (400-1)			
LNAV MDA				900-1		375 (400-1)			
CIRCLING		980-1 446 (500-1)		1000-1 466 (500-1)		1180-1¾ 646 (700-1¾)		1180-2 646 (700-2)	