

VORTAC OCF	APP CRS	Rwy Idg	6347
113.7	354°	TDZE	80
Chan 84		Apt Elev	90

VOR RWY 36

OCALA INTL-JIM TAYLOR FLD (OCF')

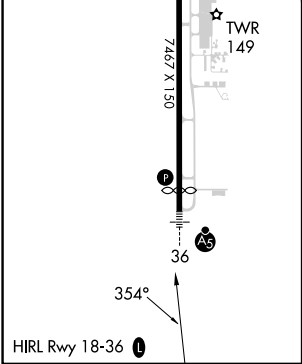
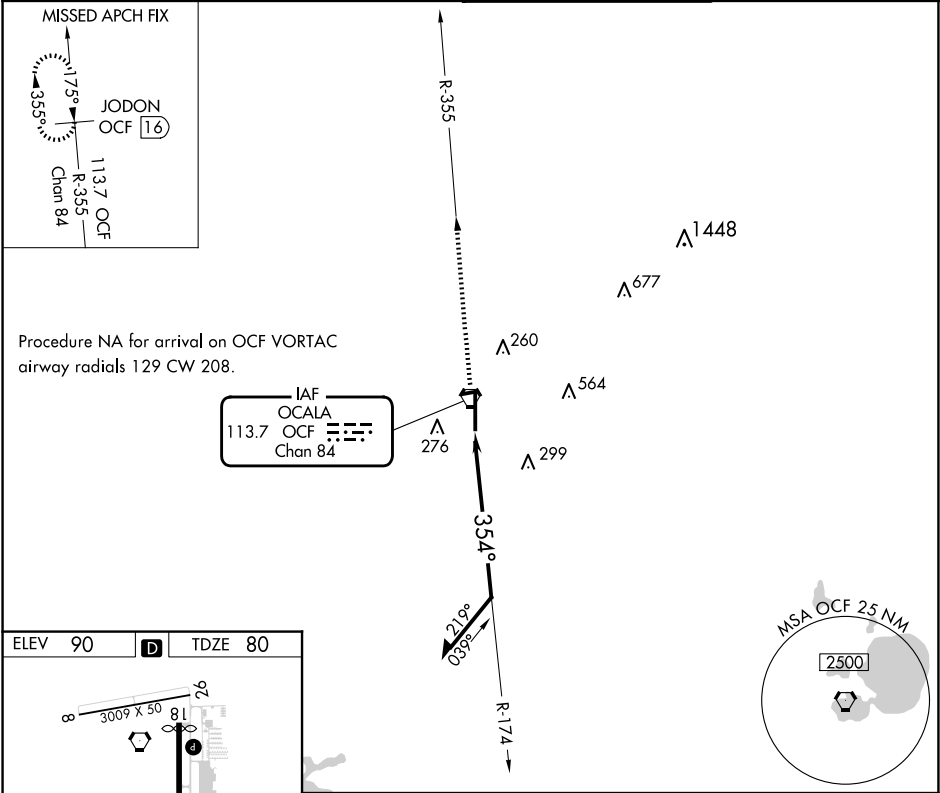
DME required.

For inop ALS, increase S-36 Cats A/B visibility to 1 SM.

MALSR

MISSED APPROACH: Climb to 2000 on OCF VORTAC R-355 to JODON/OCF VORTAC 16 DME and hold.

ATIS 128.125	JACKSONVILLE APP CON 118.6 251.15	OCALA TOWER ★ 119.25 (CTAF) 0	GND CON 121.4
-----------------	--------------------------------------	----------------------------------	------------------



2000 ↑ OCF R-355		JODON OCF 16	OCF VORTAC		Remain within 10 NM
			174°		1700
			OCF 2.7		354°
			1.6		
CATEGORY	A	B	C	D	
S-36	640-3/4	560 (600-3/4)	640-1 1/8	560 (600-1 1/8)	
CIRCLING	640-1	550 (600-1)	760-1 3/4 670 (700-1 3/4)	920-2 3/4 830 (900-2 3/4)	

SE-3, 07 AUG 2025 to 04 SEP 2025

SE-3, 07 AUG 2025 to 04 SEP 2025