

WAAS CH <b>58110</b> <b>W36A</b>	APP CRS <b>004°</b>	Rwy Idg TDZE Apt Elev <b>6347</b> <b>80</b> <b>90</b>
--	------------------------	--

RNAV (GPS) RWY 36

OCALA INTL-JIM TAYLOR FLD (OCF')

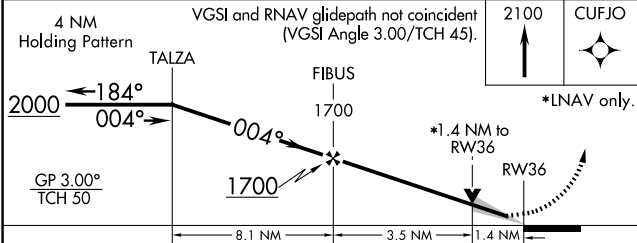
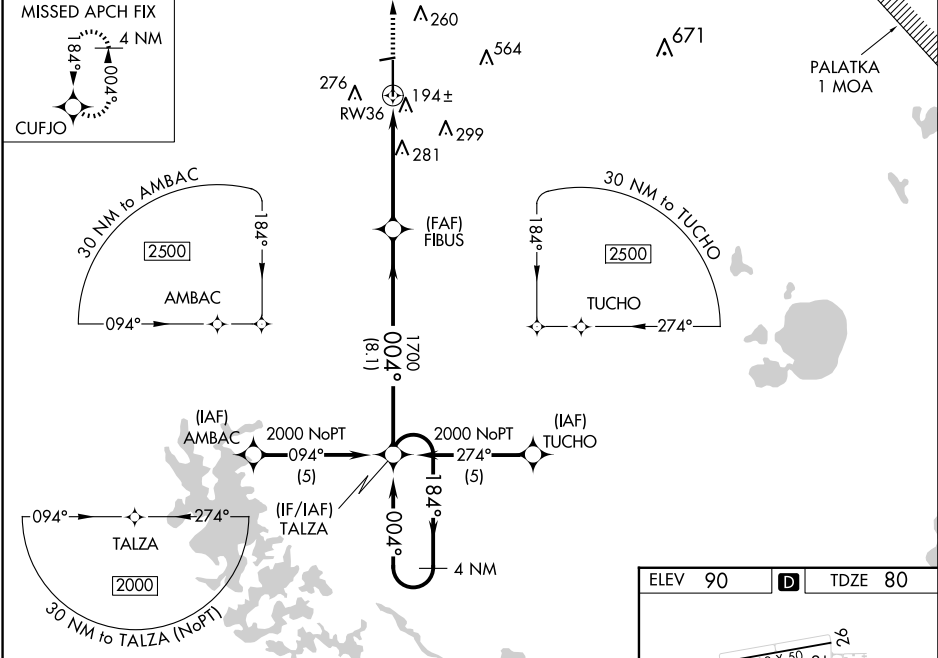
⚠ For uncompensated Baro-VNAV systems, LNAV/VNAV NA below -15°C (5°F) or above 48°C (118°F). DME/DME RNP-0.3 NA. When local altimeter setting not received, use Gainesville altimeter setting: Increase LPV DA to 361 feet, increase LNAV/VNAV DA to 644 feet and all MDAs 100 feet; increase LNAV/VNAV all Cats and LNAV visibility Cats C/D ¼ SM, increase Circling visibility Cat C ½ SM and Cat D ¼ SM. VDP and Baro-VNAV NA when using Gainesville altimeter setting. Inop table does not apply to LPV when using local altimeter setting. For inop MALSRS, increase LNAV Cats A and B visibility to 1 mile. For inop MALSRS when using Gainesville altimeter setting, increase LNAV Cats A and B visibility to 1 mile.

MALSRS



MISSED APPROACH:  
Climb to 2100 direct  
CUFJO and hold.

ATIS <b>128.125</b>	JACKSONVILLE APP CON <b>118.6 251.15</b>	OCALA TOWER ★ <b>119.25 (CTAF) 0</b>	GND CON <b>121.4</b>
------------------------	---	---	-------------------------



CATEGORY	A	B	C	D
LPV DA	280-¾ 200 (200-¾)			
LNAV/VNAV DA	563-1¼ 483 (500-1¼)			
LNAV MDA	540-¾ 460 (500-¾)			540-1 460 (500-1)
CIRCLING	600-1 510 (600-1)		760-1¾ 670 (700-1¾)	920-2¾ 830 (900-2¾)

