

WAAS CH 45640 W29A	APP CRS 289°	Rwy Ldg TDZE 4683 Apt Elev 4716
--	------------------------	---

RNAV (GPS) RWY 29

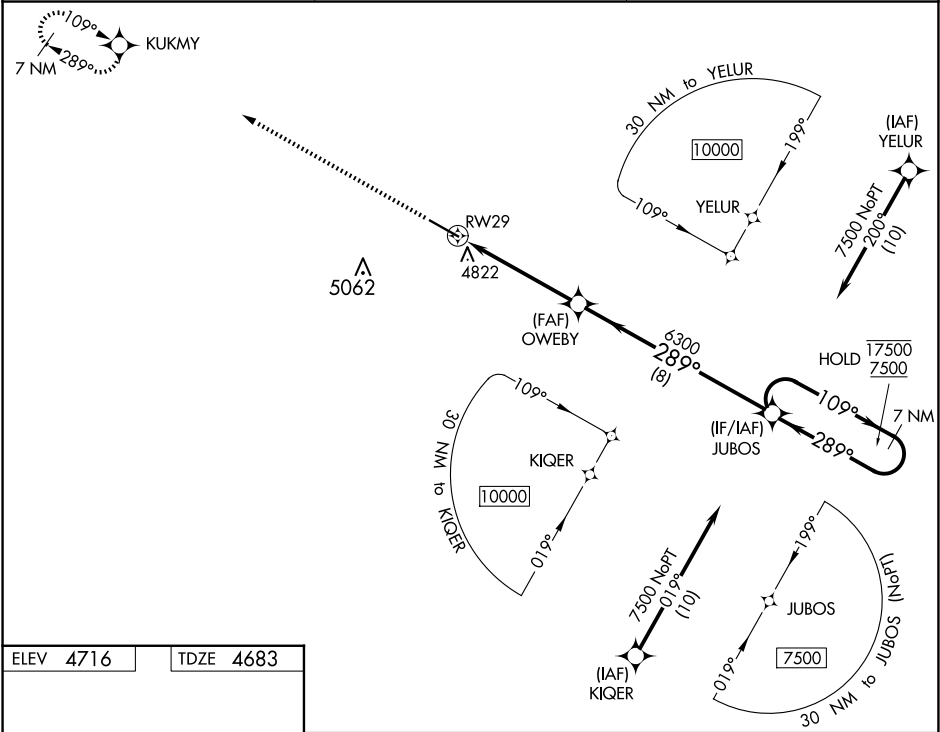
COLORADO PLAINS RGNL (AKO)

RNP APCH.

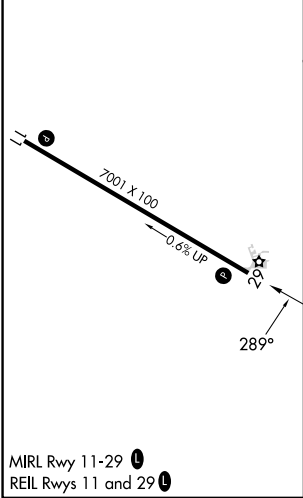
▼ For uncompensated Baro-VNAV systems, LNAV/VNAV
▲ NA below -22°C or above 54°C.

MISSED APPROACH: Climb to 7500 to KUKMY and hold.

ASOS 135.475	DENVER CENTER 133.95 317.55	UNICOM 122.8 (CTAF)
------------------------	---------------------------------------	-------------------------------



ELEV 4716	TDZE 4683
------------------	------------------



7500

KUKMY

VGSI and RNAV glidepath not coincident
(VGSI Angle 3.00/TCH 43).

7 NM Holding Pattern

*LNAV only

RW29

OWEBY

JUBOS

1.2

3.8 NM

8 NM

17500

7500

GP 3.00°

TCH 52

CATEGORY	A	B	C	D
LPV DA	4933-1	250 (300-1)		
LNAV/VNAV DA	4987-1	304 (300-1)		
LNAV MDA	5080-1 397 (400-1)	5080-1½ 397 (400-1½)		
CIRCLING	5140-1 424 (500-1)	5260-1 544 (600-1)	5420-2 704 (800-2)	5420-2¼ 704 (800-2¼)