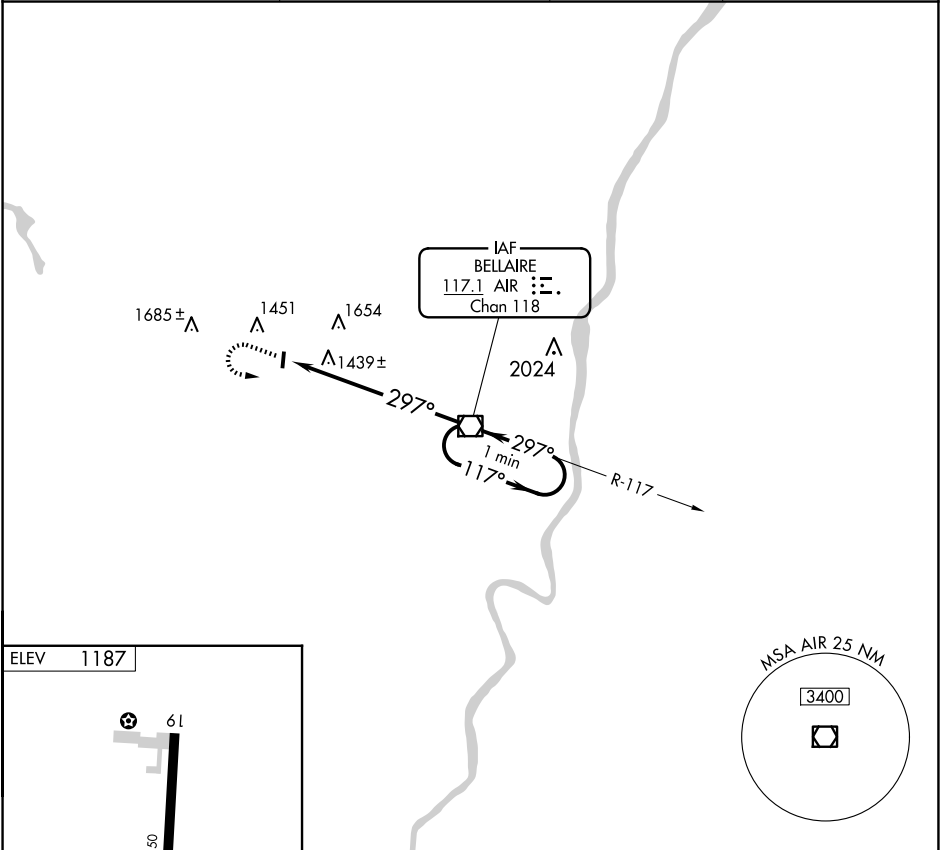


VOR/DME AIR <b>117.1</b> Chan <b>118</b>	APP CRS <b>297°</b>	Rwy Idg TDZE Apt Elev <b>1187</b>	<b>N/A</b> <b>N/A</b>
			<b>VOR-A</b> ALDERMAN (2P7)

<b>NA</b> Use Wheeling Ohio County altimeter setting; when not received, use Pittsburgh Intl altimeter setting and increase all MDAs 80 feet and Circling Cat A visibility ¼ SM. Procedure NA at night. Helicopter visibility reduction below 1 SM NA.	MISSED APPROACH: Climb to 3100 then left turn direct AIR VOR/DME and hold.
--	--

HIG ASOS <b>127.375</b>	CLEVELAND CENTER <b>126.95 239.30</b>	CTAF <b>122.9</b>	<b>123.3 0</b>
----------------------------	--	----------------------	----------------



ELEV 1187		3100		AIR		AIR VOR/DME		One Minute Holding Pattern	
61		297°		7.1		297°		117°	
0.9% UP		2840 X 50		7.1 NM		3100			
LIRL Rwy 1-19 0		CATEGORY		A		B		C	
FAF to MAP 7.1 NM		Knots		60		90		120	
		Min:Sec		7:06		4:44		3:33	
				150		180			
				2:50		2:22			
		CIRCLING		1920-1 733 (800-1)		2000-1¼ 813 (900-1¼)		NA	