

EC-1, 07 AUG 2025 to 04 SEP 2025

TOP ALTITUDE:
ASSIGNED BY ATC

DETROIT DEP CON
132.35 284.0
ATIS
125.025
CLNC DEL
118.25
GND CON
121.9
PONTIAC TOWER★
120.5 (CTAF)

RNAV-1 DME/DME/IRU or GPS.
RADAR required.

TAKEOFF RUNWAYS 9L/R: Climb on heading 095° or as assigned by ATC, thence....

TAKEOFF RUNWAYS 27L/R: Climb on heading 275° or as assigned by ATC, thence....

....for RADAR vectors to JWELS, then on track 218° to SNDRS, then on (transition). Maintain ATC assigned altitude, expect filed altitude 10 minutes after departure.

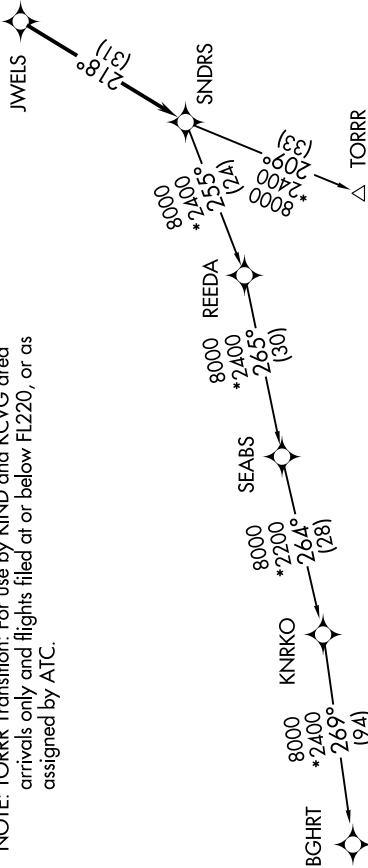
BGHR Transition (SNDRS3.BGHR):

TORR Transition (SNDRS3.TORR):

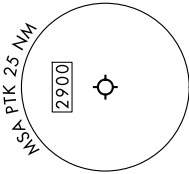


NOTE: Turbojet departures at/above 10000, maintain 280K until advised by ATC.

NOTE: TORR Transition: For use by KIND and KCVG area arrivals only and flights filed at or below FL220, or as assigned by ATC.



TAKEOFF MINIMUMS:
Rwys 18, 36: NA - Environmental.
Rwys 9L/R, 27L/R: Standard.



NOTE: Chart not to scale.

EC-1, 07 AUG 2025 to 04 SEP 2025