

23222

RNAV (GPS) RWY 27L
OAKLAND COUNTY INTL (PTK)

▼ For uncompensated Baro-VNAV systems, LNAV/VNAV NA below -16°C (4°F) or above 47°C (116°F).
▲ Baro-VNAV and VDP NA when using Coleman A Young altimeter setting. Circling Rwy 9L, 36 NA at night. When local altimeter setting not received, use Coleman A Young Muni altimeter setting and increase LPV DA to 1279 feet, LNAV/VNAV DA to 1568 and all MDA 120 feet, increase LPV and LNAV/VNAV all cats visibility $\frac{1}{4}$ SM, LNAV Cat C/D, and Circling Cat C/D visibility $\frac{1}{2}$ SM.

MISSED APPROACH.
Climb to 3000 direct
EDESE and hold.

ATIS 125.025	DETROIT APP CON 132.35 284.0	PONTIAC TOWER ★ 120.5 (CTAF) 0	GND CON 121.9	CLNC DEL 118.25	UNICOM 122.95
-----------------	---------------------------------	-----------------------------------	------------------	--------------------	------------------

FLINT
FNT

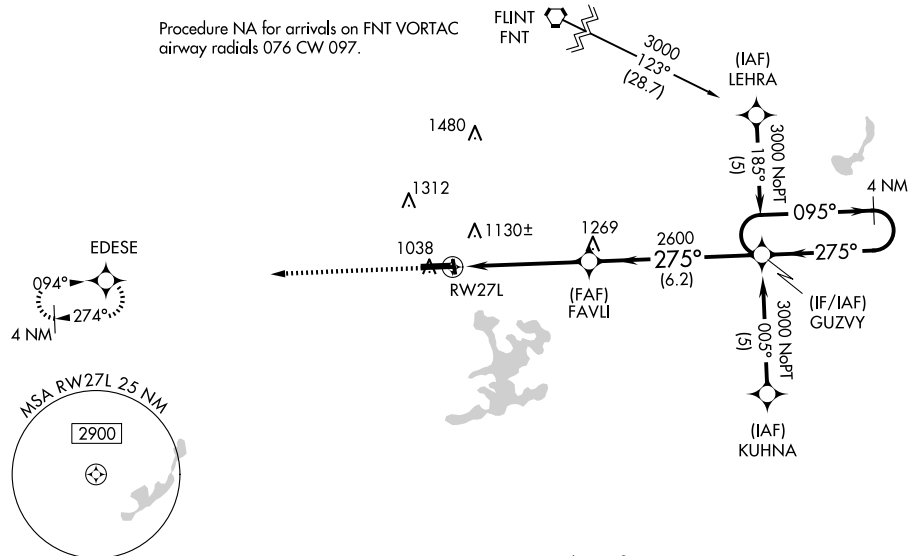


Diagram illustrating a VOR/DME station (RW27L) and a RNAV glidepath. The diagram shows a 4 NM Holding Pattern at 3000 feet, a 275° turn to a 2600 feet altitude, and a 27° turn to a 3000 feet altitude. The glidepath is 3.00° TCH 47. The diagram also shows the VGS and RNAV glidepath not coincident (VGS Angle 3.00/TCH 42).

PONTIAC, MICHIGAN
Orig-A 19JUL18

OAKLAND COUNTY INTL (PTK)
RNAV (GPS) RWY 27L

EC-1, 07 AUG 2025 to 04 SEP 2025