

LOC I-PTK	APP CRS	Rwy Idg	6520
111.1	275°	TDZE	974
		Apt Elev	981

LOC BC RWY 27L

OAKLAND COUNTY INTL (PTK)

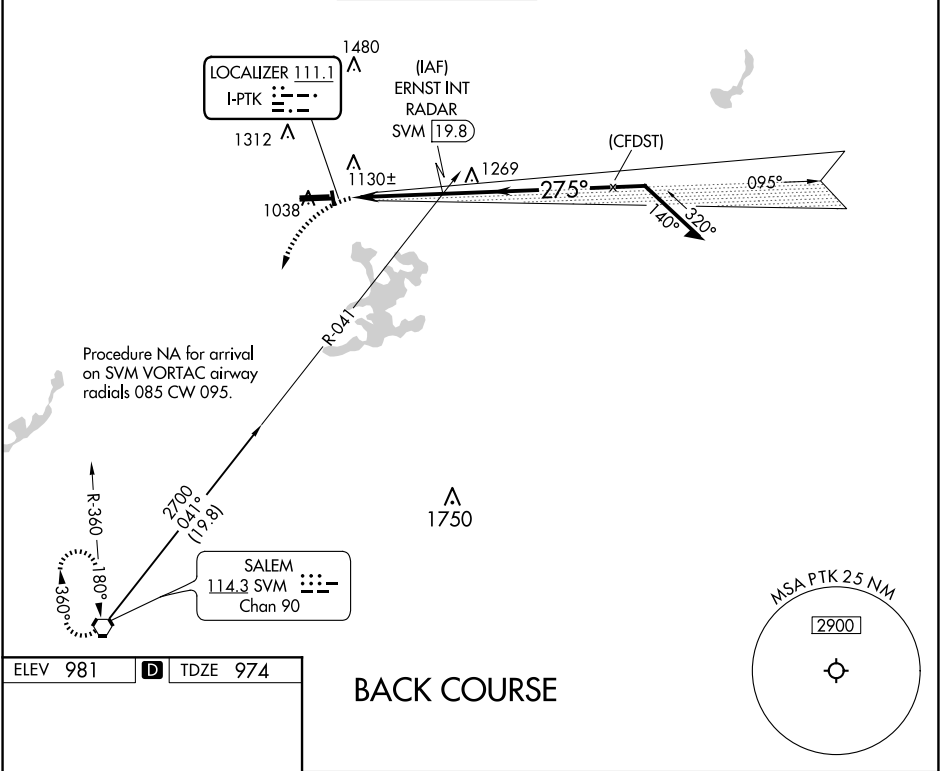
⚠

⚠

Circling Rwy 9L, 36 NA at night. When local altimeter setting not received, use Coleman A Young Muni altimeter setting and increase all MDA 120 feet, increase S-27L Cat C/D visibility ¾ SM and Circling Cat C/D visibility ½ SM.

MISSED APPROACH:
Climbing left turn to 3000 direct SVM VORTAC and hold.

ATIS	DETROIT APP CON	PONTIAC TOWER ★	GND CON	CLNC DEL	UNICOM
125.025	132.35 284.0	120.5 (CTAF) 0	121.9	118.25	122.95



ELEV 981 D TDZE 974

HIRL Rwy 9R-27L
MIRL Rwy 9L-27R
REIL Rwy 27L
REIL Rwys 9L and 27R

FAF to MAP 3.3 NM

Knots	60	90	120	150	180
Min:Sec	3:18	2:12	1:39	1:19	1:06

3000 SVM		ERNST INT RADAR				Remain within 10 NM
		I-PTK		2300		Disregard GS indications.
		≤ 3.00° TCH 42		2500		
		0.7 3.3 NM				
CATEGORY	A	B	C	D		
S-LOC 27L	1 440-1	466 (500-1)	1 440-1¾	466 (500-1¾)		
CIRCLING	1 500-1 519 (600-1)	1 540-1 559 (600-1)	1 640-1¾ 659 (700-1¾)	1 640-2 659 (700-2)		

EC-1, 07 AUG 2025 to 04 SEP 2025

EC-1, 07 AUG 2025 to 04 SEP 2025