


LOC I-PTK	APP CRS	Rwy Idg	6520
111.1	095°	TDZE	981
		Apt Elev	981

ILS or LOC RWY 9R
OAKLAND COUNTY INTL (PTK)

RADAR required for procedure entry.

▼ Circling Rwy 9L, 36 NA at night. When local altimeter setting not received, use Coleman A Young Muni altimeter setting and increase DA to 1286 feet and all MDA 120 feet, increase S-LOC 9R Cat B visibility to RVR 4000, Cat C/D visibility ¾ SM, and Circling Cat B/C/D visibility ½ SM. For inop MALSR, increase S-LOC 9R Cat C/D visibility to 1¾ SM. For inop MALSR, when using Coleman A Young altimeter, increase S-ILS 9R all Cats visibility to RVR 4500, and increase S-LOC 9R Cat C/D visibility to 2 SM. **RVR 1800 authorized with the use of FD or AP or HUD to DA, NA when using Coleman A Young Muni altimeter setting.

MALSR



MISSED APPROACH: Climb to 1600 then climbing right turn to 3000 direct SVM VORTAC and hold.

ATIS	DETROIT APP CON	PONTIAC TOWER ★	GND CON	CLNC DEL	UNICOM
125.025	132.35 284.0	120.5 (CTAF) 0	121.9	118.25	122.95

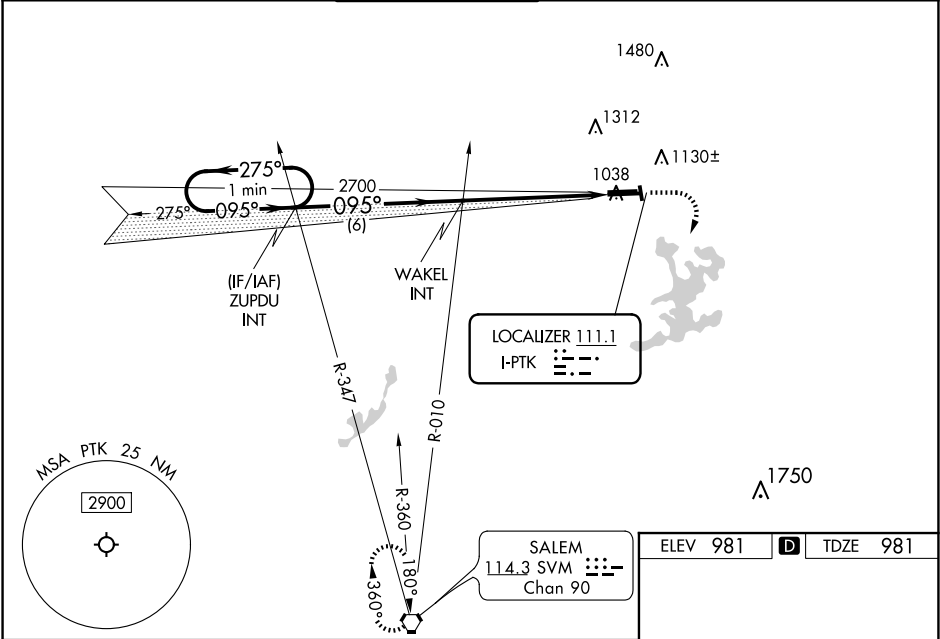
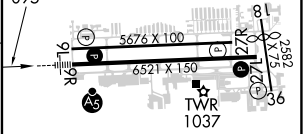


Diagram showing the final approach segment with ZUPDU and WAKEL intercepts, 2700 MSL, and distances of 6 NM and 5.3 NM. It also includes a GS 3.00° TCH 45° and a 360° turn.

ELEV 981 TDZE 981



CATEGORY	A	B	C	D
S-ILS 9R	** 1181/24		200 (200-½)	
S-LOC 9R	1620/24	639 (700-½)	1620-1¾	639 (700-1¾)
C CIRCLING	1620-1	639 (700-1)	1640-1¾	1640-2
			659 (700-1¾)	659 (700-2)

HIRL Rwy 9R-27L 0
MIRL Rwy 9L-27R
REIL Rwy 27L 0
REIL Rwy 9L and 27R

FAF to MAP 5.3 NM

Knots	60	90	120	150	180
Min:Sec	5:18	3:32	2:39	2:07	1:46

EC-1, 07 AUG 2025 to 04 SEP 2025

EC-1, 07 AUG 2025 to 04 SEP 2025