

## CROSSVILLE, TENNESSEE

AL-5051 (FAA)

24361

WAAS CH <b>65911</b> <b>W26A</b>	APP CRS <b>256°</b>	Rwy Idg TDZE Apt Elev	<b>5423</b> <b>1871</b> <b>1882</b>
--	------------------------	-----------------------------	---

# RNAV (GPS) RWY 26

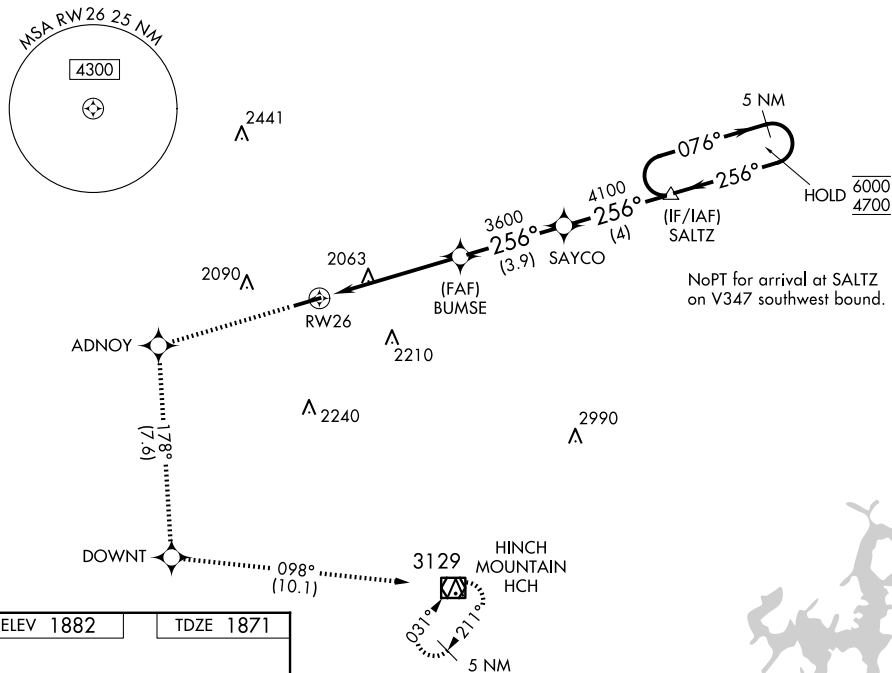
## CROSSVILLE MEML-WHITSON FLD (CSV)

RNP APCH - GPS.

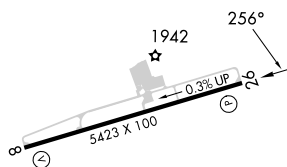
**T**  
**A** For uncompensated Baro-VNAV systems,  
LNAV/VNAV NA below -11°C or above 54°C.

**MISSED APPROACH:** Climb to 5000 direct ADNOY and left turn on track 178° to DOWNT and on track 098° to HCH VOR/DME and hold.

ASOS <b>120.625</b>	ATLANTA CENTER <b>133.6 254.3</b>	UNICOM <b>122.7 (CTAF) 0</b>
------------------------	--------------------------------------	---------------------------------



ELEV 1882		TDZE 1871
-----------	--	-----------



5000 ↑	ADNOY ✦	tr 178°	DOWNT ✦	tr 098°	HCH ◻	SALTZ 5 NM Holding Pattern			
						076° → 6000 ← 256° 4700			
RW26						GP 3.00° TCH 60			
CATEGORY		A		B		C		D	
LPV	DA			2121- <sup>3</sup> / <sub>4</sub>		250 (300- <sup>3</sup> / <sub>4</sub> )			
LNAV/ VNAV	DA			2170- <sup>7</sup> / <sub>8</sub>		299 (300- <sup>7</sup> / <sub>8</sub> )			
LNAV	MDA	2440-1 569 (600-1)				2440-1 <sup>5</sup> / <sub>8</sub> 569 (600-1 <sup>5</sup> / <sub>8</sub> )			
<b>C</b> CIRCLING		2440-1 558 (600-1)				2440-1 <sup>5</sup> / <sub>8</sub> 558 (600-1 <sup>5</sup> / <sub>8</sub> )		2540-2 658 (700-2)	

REIL Rwy 26  
HIRL Rwy 8-26 **L**

## CROSSVILLE, TENNESSEE

Amdt 1 26DEC24

CROSSVILLE MEML-WHITSON FLD (CSV)

35°57'N-85°05'W

RNAV (GPS) RWY 26

SE-1, 07 AUG 2025 to 04 SEP 2025