

APP CRS	Rwy Idg	3635
301°	TDZE	1108
	Apt Elev	1110

RNAV (GPS) RWY 30

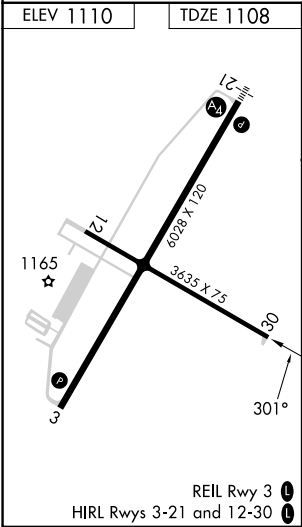
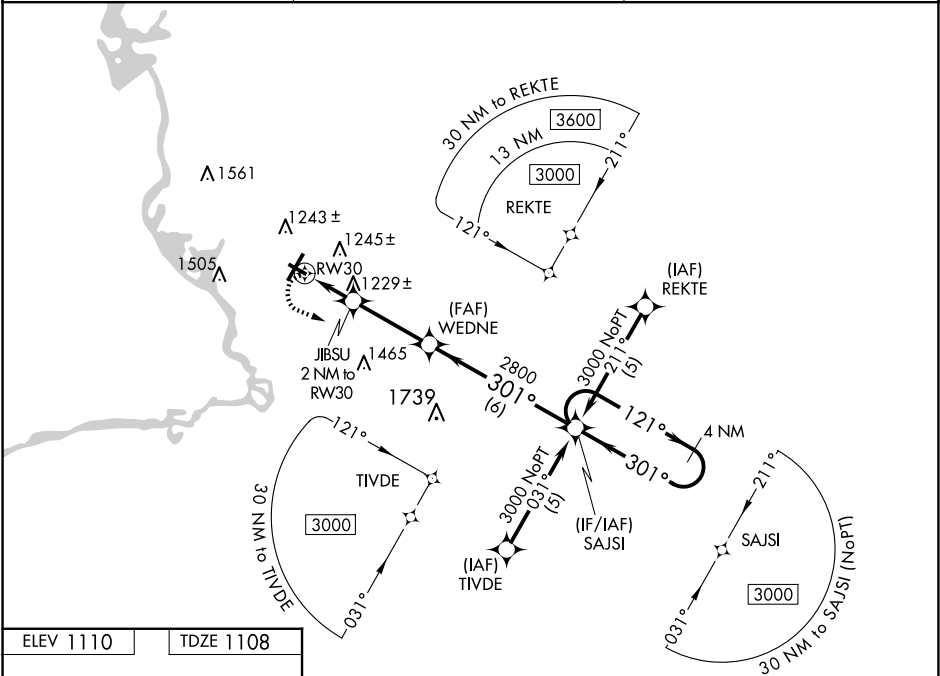
STEVENS POINT MUNI (STE)

RNP APCH - GPS.

⚠ Rwy 30 helicopter visibility reduction below ¾ SM NA. When local altimeter setting not received, use Mosinee altimeter setting and increase all MDA 60 feet, increase LNAV Cat C and D visibility ¼ SM. VDP NA when using Mosinee altimeter setting.

MISSED APPROACH:
Climbing left turn to 3000
direct SAJSI and hold.

AWOS-3 119.275	MINNEAPOLIS CENTER 124.4 317.7	UNICOM 122.7 (CTAF) 📻
-------------------	-----------------------------------	---------------------------------



3000 SAJSI				4 NM Holding Pattern
JIBSU 2 NM to RW30				WEDNE
RW30				SAJSI
1.2 NM to RW30				301°
1.2				0.8
3.1 NM				6 NM
CATEGORY	A	B	C	D
LNAV MDA	1520-1	412 (500-1)	1520-1½	412 (500-1½)
📻 CIRCLING	1580-1 470 (500-1)	1600-1 490 (500-1)	1860-2¼ 750 (800-2¼)	1860-2½ 750 (800-2½)