

APP CRS	Rwy Idg	<b>3635</b>
<b>121°</b>	TDZE	<b>1108</b>
	Apt Elev	<b>1110</b>

# RNAV (GPS) RWY 12

## STEVENS POINT MUNI (STE)

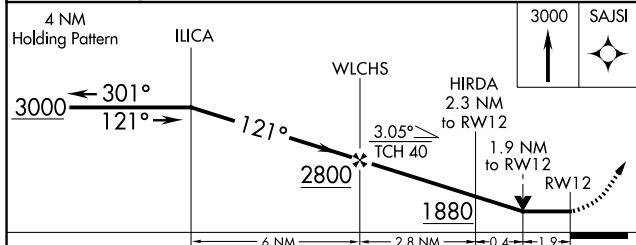
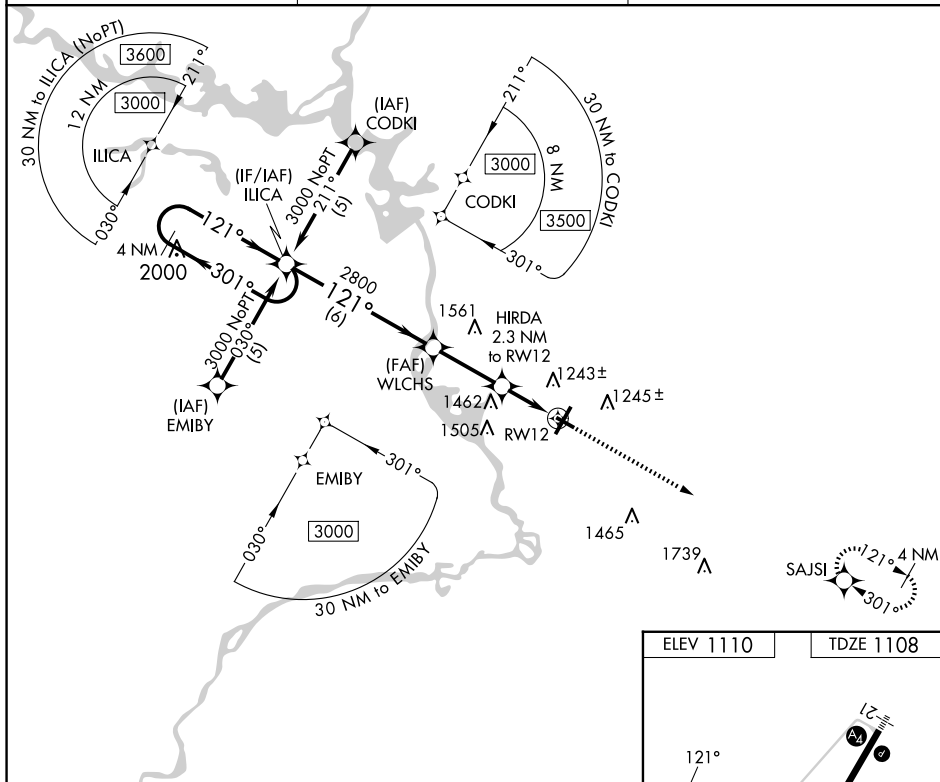
RNP APCH - GPS.

**T** Rwy 12 helicopter visibility reduction below  $\frac{3}{4}$  SM NA. When local altimeter not received, use Mosinee altimeter setting and increase all MDA 60 feet, increase LNAV Cat C and D visibility  $\frac{1}{8}$  SM. VDP NA when using Mosinee altimeter setting.

**MISSED APPROACH:** Climb to 3000 direct SAJSI and hold.

AWOS-3  
**119,275**

MINNEAPOLIS CENTER  
124.4 317.7

UNICOM  
122.7 (CTAF) **L**

CATEGORY	A	B	C	D
LNAV MDA	1760-1	652 (700-1)	1760-1 $\frac{7}{8}$	652 (700-1 $\frac{7}{8}$ )
<b>C</b> CIRCLING	1760-1	650 (700-1)	1860-2 $\frac{1}{4}$ 750 (800-2 $\frac{1}{4}$ )	1860-2 $\frac{1}{2}$ 750 (800-2 $\frac{1}{2}$ )

