

VOR/DME GON	APP CRS	Rwy Idg	5000
110.85	242°	TDZE	8
Chan 45 (Y)		Apt Elev	9

VOR RWY 23

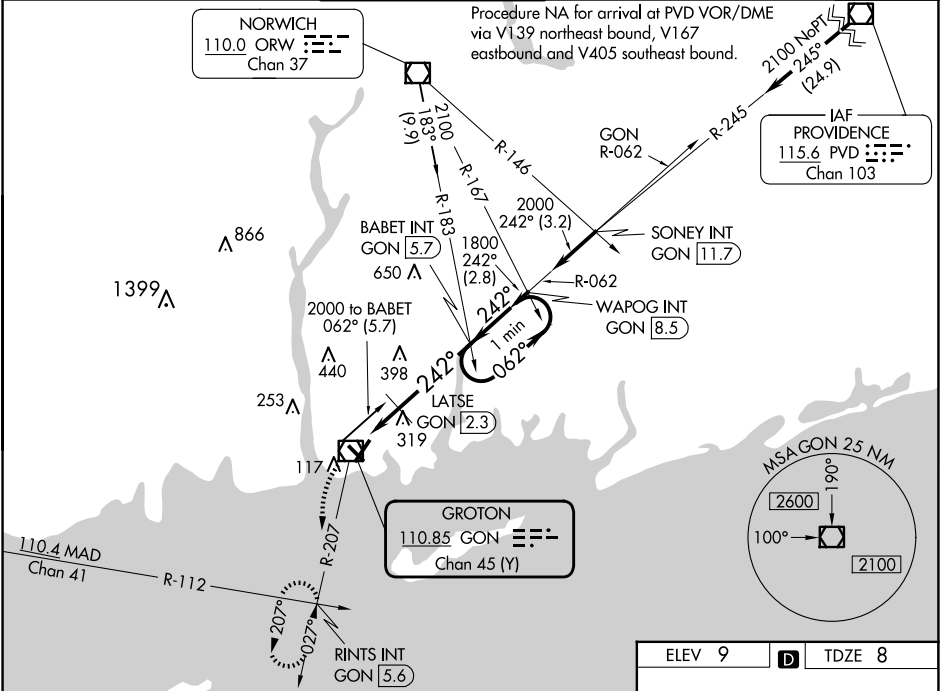
GROTON-NEW LONDON (GON)

Circling Rwy 15 NA at night.

Rwy 23 helicopter visibility reduction below 1 SM NA.

MISSED APPROACH: Climbing left turn to 2000 via GON R-207 to RINTS INT/GON 5.6 DME and hold.

ATIS	PROVIDENCE APP CON *	GROTON TOWER *	GND CON	CLNC DEL	CLNC DEL
127.0	125.75 319.2	125.6 (CTAF) 0 236.775	121.65 236.775	119.85 (when twr closed)	121.65



<div>2000</div> <div>GON R-207</div>		<div>RINTS INT</div>		<div>VGSI and descent angles not coincident (VGSI Angle 3.00/TCH 49).</div>		<div>BABET INT GON <u>5.7</u></div>		<div>One Minute Holding Pattern</div>	
<div><div>GON VOR/DME</div><div><u>0.7</u></div></div>		<div><div>LATSE GON</div><div><u>2.3</u></div></div>		<div><div>242°</div><div>3.48°</div><div>TCH 50</div></div>		<div><div>1800</div><div>062°</div><div>242°</div><div>2000</div></div>			
<div>1.6 NM</div>		<div>3.4 NM</div>							
CATEGORY	A		B		C		D		
S-23	640-1 632 (700-1)				640-1 ³ / ₄		632 (700-1 ³ / ₄)		
CIRCLING	640-1 631 (700-1)				700-2 691 (700-2)		840-2 ³ / ₄ 831 (900-2 ³ / ₄)		
LATSE FIX MINIMUMS									
S-23	580-1 572 (600-1)				580-1 ⁵ / ₈		572 (600-1 ⁵ / ₈)		
CIRCLING	580-1 571 (600-1)		620-1 611 (700-1)		700-2 691 (700-2)		840-2 ³ / ₄ 831 (900-2 ³ / ₄)		

ELEV 9

D

TDZE 8

242°

TWR 69

5000 X 150

4000 X 98

5

REIL Rwy 23 and 33

HIRL Rwy 5-23 and 15-33

FAF to MAP 5 NM

Knots	60	90	120	150	180
Min:Sec	5:00	3:20	2:30	2:00	1:40