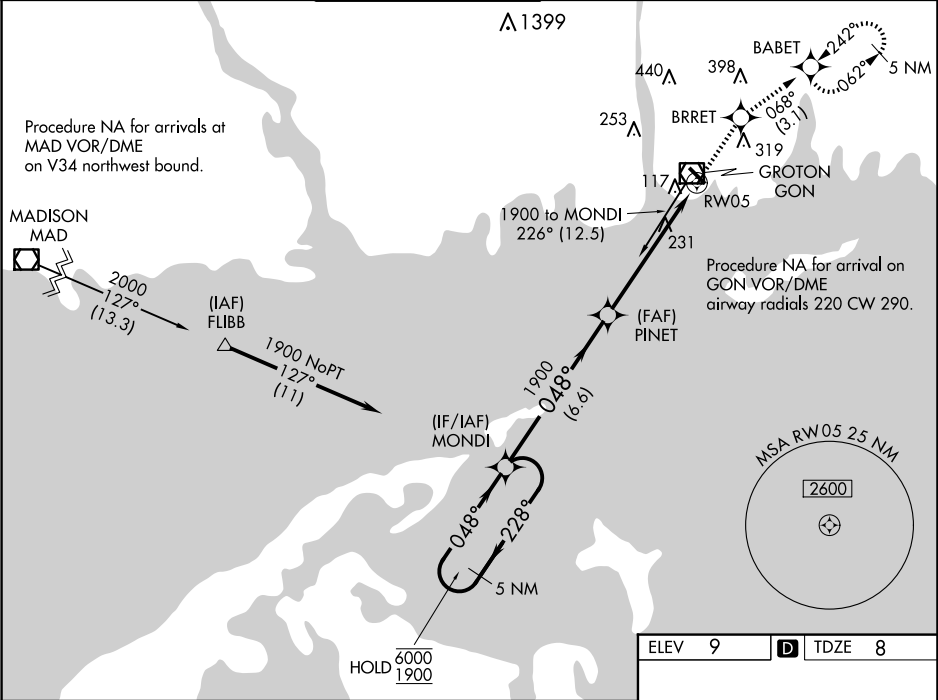


WAAS CH <b>45521</b> <b>W05A</b>	APP CRS <b>048°</b>	Rwy Idg TDZE Apl Elev	<b>5000</b> <b>8</b> <b>9</b>
--	------------------------	-----------------------------	-------------------------------------

RNAV (GPS) RWY 5

GROTON-NEW LONDON (GON)

RNP APCH - GPS.			MALSR		MISSED APPROACH: Climb to 2100 direct BRRET and on track 068° to BABET and hold, continue climb-in-hold to 2100.	
<div><div></div><div></div></div> <div>Circling Rwy 15 NA at night. For uncompensated Baro-VNAV systems, procedure NA below -15°C or above 54°C. For inop ALS, increase LPV all Cats visibility to RVR 4500 and LNAV Cats visibility C/D to 1½.</div>			<div><div></div><div></div></div>			
ATIS <b>127.0</b>	PROVIDENCE APP CON ★ <b>125.75 319.2</b>	GROTON TOWER ★ <b>125.6 (CTAF) 0 236.775</b>	GND CON <b>121.65 236.775</b>		CLNC DEL <b>119.85</b> (when twr closed)	CLNC DEL <b>121.65</b>



5 NM Holding Pattern		2100	BRRET	BABET
		↑	✧	✧
			tr	068°
MONDI		PINET		
6000 ← 228°		1900	1.4 NM to RW05	
1900 → 048°			RW05	
GP 3.00°				
TCH 42				
		6.6 NM	4.3 NM	1.4 NM
CATEGORY	A	B	C	D
LPV DA		292/24	284 (300-½)	
LNAV/VNAV DA		533/55	525 (600-1)	
LNAV MDA	500/24	492 (500-½)	500/50	492 (500-1)
CIRCLING	580-1 571 (600-1)	620-1 611 (700-1)	700-2 691 (700-2)	840-2¾ 831 (900-2¾)

