

APP CRS
329°

Rwy Idg
3666

TDZE
8

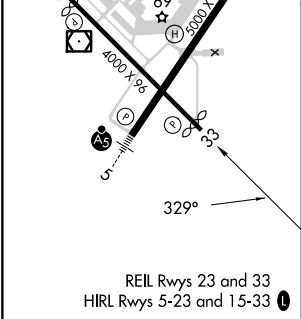
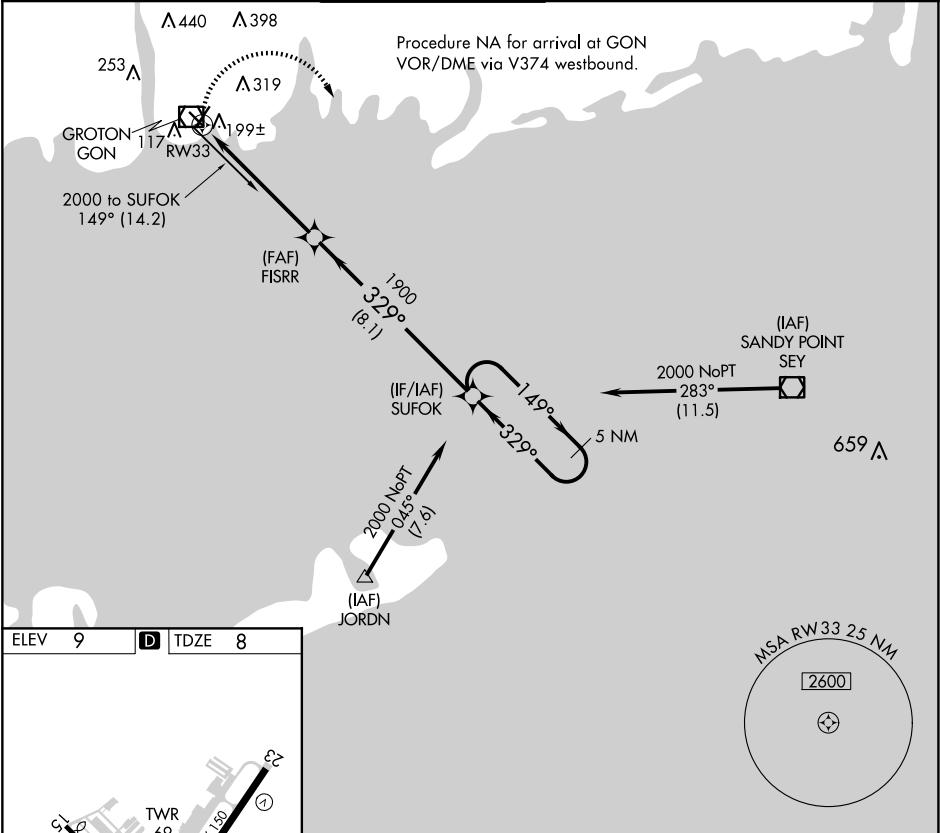
Apt Elev
9

RNAV (GPS) RWY 33
GROTON-NEW LONDON (GON)

RNP APCH.
▼
Rwy 33 helicopter visibility reduction below ¾ SM NA.

MISSED APPROACH: Climbing right turn to 2000 direct SUFOK and hold.

ATIS 127.0	PROVIDENCE APP CON ★ 125.75 319.2	GROTON TOWER ★ 125.6 (CTAF) 236.775	GND CON 121.65 236.775	CLNC DEL 119.85 (when twr closed)	CLNC DEL 121.65
----------------------	---	---	----------------------------------	--	---------------------------



2000

SUFOK

VGSI and descent angles not coincident
(VGSI Angle 3.75/TCH 34).

5 NM Holding Pattern

FISRR

1900

329°

149°

2000

RW33

3.05°

TCH 47

5.7 NM

8.1 NM

CATEGORY	A	B	C	D
LNAV MDA	460-1	452 (500-1)	460-1¼ 452 (500-1¼)	460-1½ 452 (500-1½)