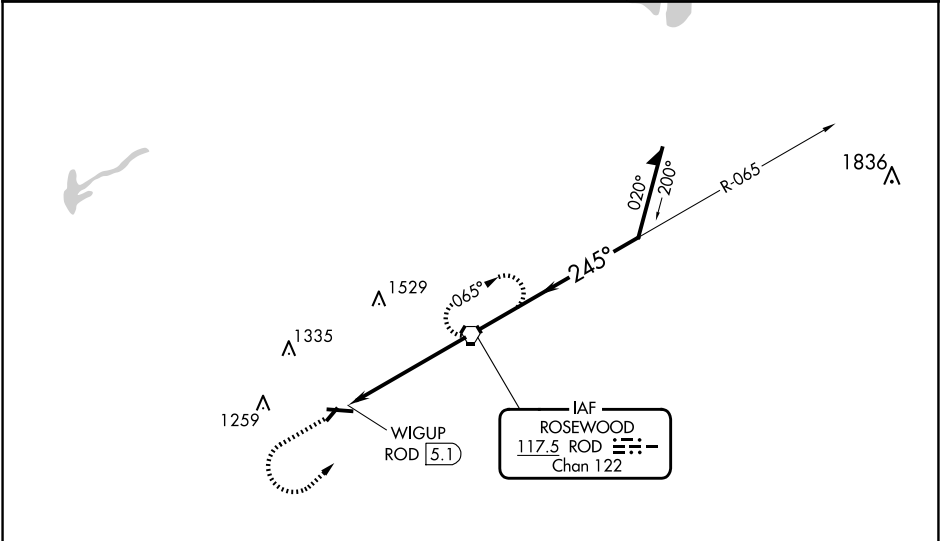


VORTAC ROD	APP CRS	Rwy Idg	N/A
117.5	245°	TDZE	N/A
Chan 122		Apt Elev	1044

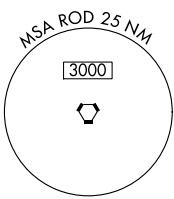
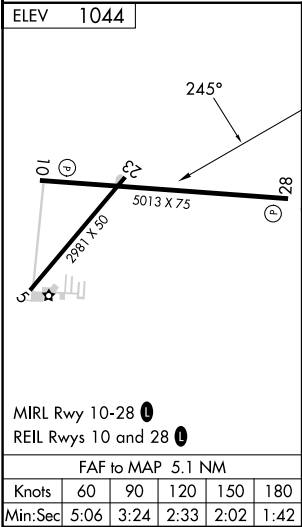
VOR-A
SIDNEY MUNI (SCA)

▼ ▲ NA	When local altimeter setting not received, use James M Cox Dayton Intl altimeter setting and increase all MDAs 60 feet and increase Cat C visibility ¼ mile. Night Landing: Rwy 28 operational VGSI required, remain on or above VGSI glidepath until threshold. Helicopter visibility reduction below 1 SM NA.	MISSED APPROACH: Climb to 3000 then left turn direct ROD VORTAC and hold.
-----------	---	---

AWOS-3 120.425	COLUMBUS APP CON 134.45 294.5	UNICOM 123.05 (CTAF) 0
-------------------	----------------------------------	---------------------------



NoPT for arrivals on ROD Vortac airway radials 314 CW 088.



3000	ROD	ROD VORTAC	065°	245°	3000	Remain within 10 NM
WIGUP ROD 5.1	245°	5.1 NM	245°	3000		
CATEGORY						
A						
B						
C						
D						
1540-1 496 (500-1) 1640-1½ 596 (600-1½) 1640-2 596 (600-2)						