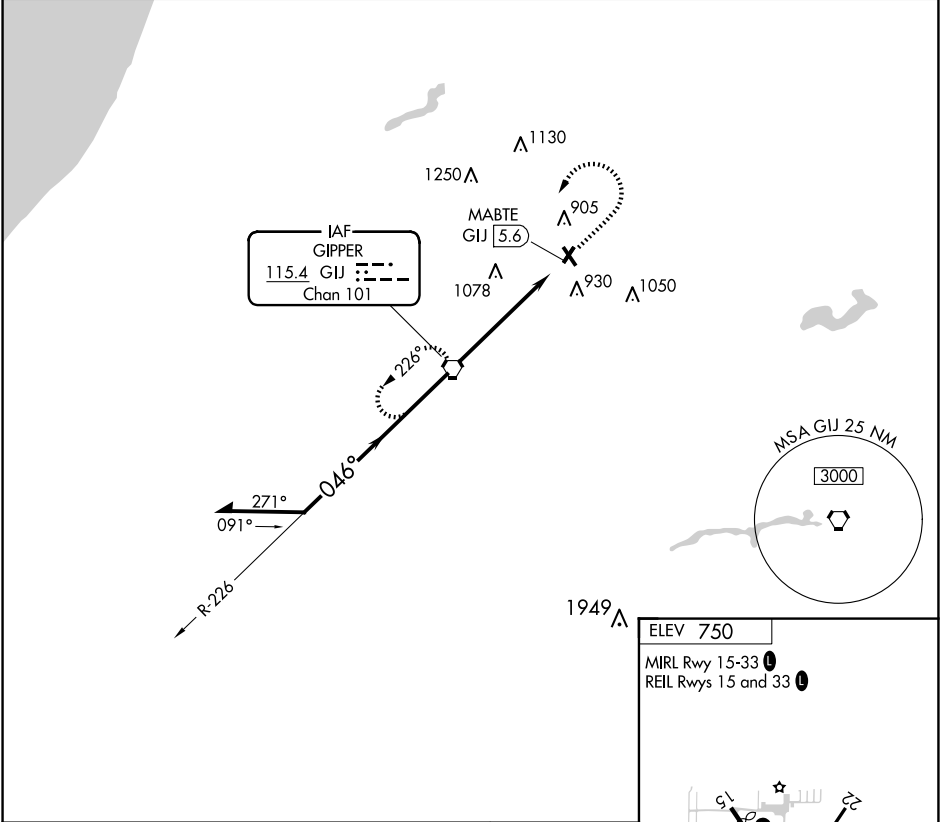


VORTAC GIJ 115.4 Chan 101	APP CRS 046°	Rwy Ldg TDZE Apt Elev 750	N/A N/A 750
---	------------------------	---	--

VOR-A
JERRY TYLER MEML (3TR)

DME required. ▼ Procedure NA at night. Use SBN altimeter setting; when not received, use EKM altimeter setting and increase all MDAs 20 feet. ▲ NA Rwy 4, 15, 22, and 33 helicopter visibility reduction below 1 SM NA.		MISSED APPROACH: Climb to 2500 then left turn direct GIJ VORTAC and hold.	
SBN ASOS 120.675	SOUTH BEND APP CON ★ 118.55 257.8	GCO 121.725	UNICOM 122.8 (CTAF) ①



Remain within 10 NM				GIJ VORTAC 2500	2500	GIJ
				2500	046°	2500
				5.6 NM	MABTE GIJ 5.6	
CATEGORY	A	B	C	D		
CIRCLING	1300-1	550 (600-1)	1460-2 710 (800-2)	NA		

ELEV 750					
MIRL Rwy 15-33 ①					
REIL Rwy 15 and 33 ①					
FAF to MAP 5.6 NM					
Knots	60	90	120	150	180
Min:Sec	5:36	3:44	2:48	2:14	1:52