

VORTAC RBV	APP CRS	Rwy Idg	3975
<u>113.8</u>	288°	TDZE	118
Chan 85		Apt Elev	118

VOR RWY 29
TRENTON-ROBBINSVILLE (N87)

T
A NA

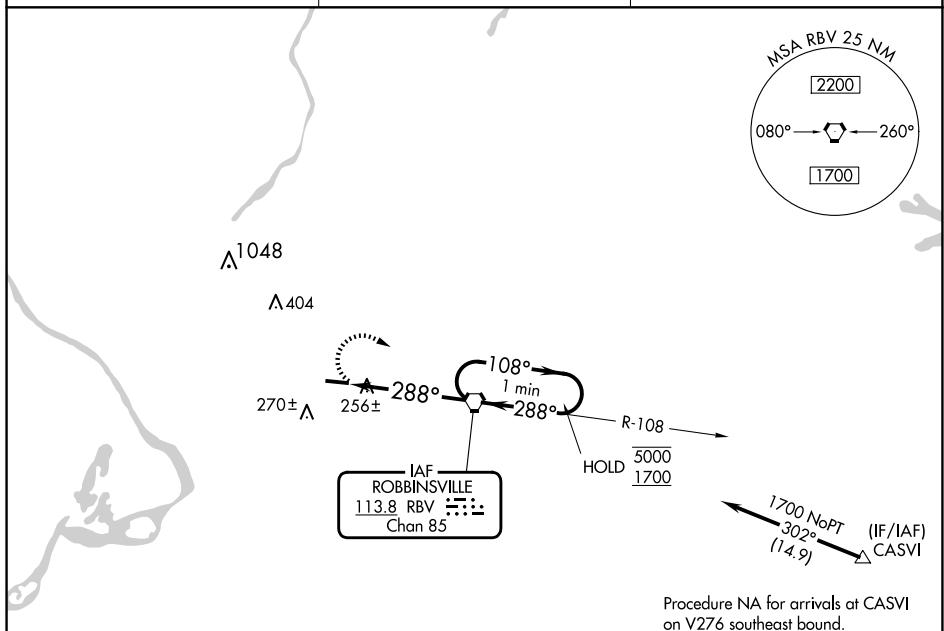
Procedure NA at night.
Rwy 29 helicopter visibility reduction below 1 SM NA.
Use Wrightstown altimeter setting.

MISSED APPROACH: Climbing right turn to 1700 direct RBV VORTAC and hold.

MC GUIRE APP CON
126.475 363.8

UNICOM
123.0 (CTAF)

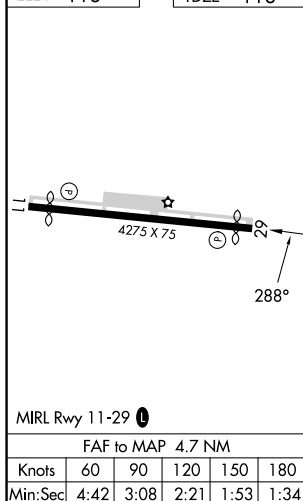
123.3 L



Procedure NA for arrivals at CASVI
on V276 southeast bound.

ELEV 118

TDZE 118

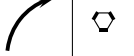


1700

RBV

Visual Segment - Obstacles.

One Minute Holding Pattern

RBV
4.7RBV
VORTAC
$$\begin{array}{r} 108^\circ \rightarrow \overline{5000} \\ -288^\circ \quad \underline{} \\ 1700 \end{array}$$

CATEGORY

A

D

S-29

62

0-1 502 (600-1)

6:

0-1 $\frac{3}{8}$ 502 (600-1 $\frac{3}{8}$)

CIRCLING

40

0.1 5/01/00 11

68

0-1½	760-2
------	-------

ROBBINSVILLE, NEW JERSEY

Amdt 11C 30DEC21

TRENTON-ROBBINSVILLE (N87)

VOR RWY 29

40°13'N-74°36'W