

APP CRS	Rwy Idg	3975
289°	TDZE	118
	Apt Elev	118

RNAV (GPS) RWY 29

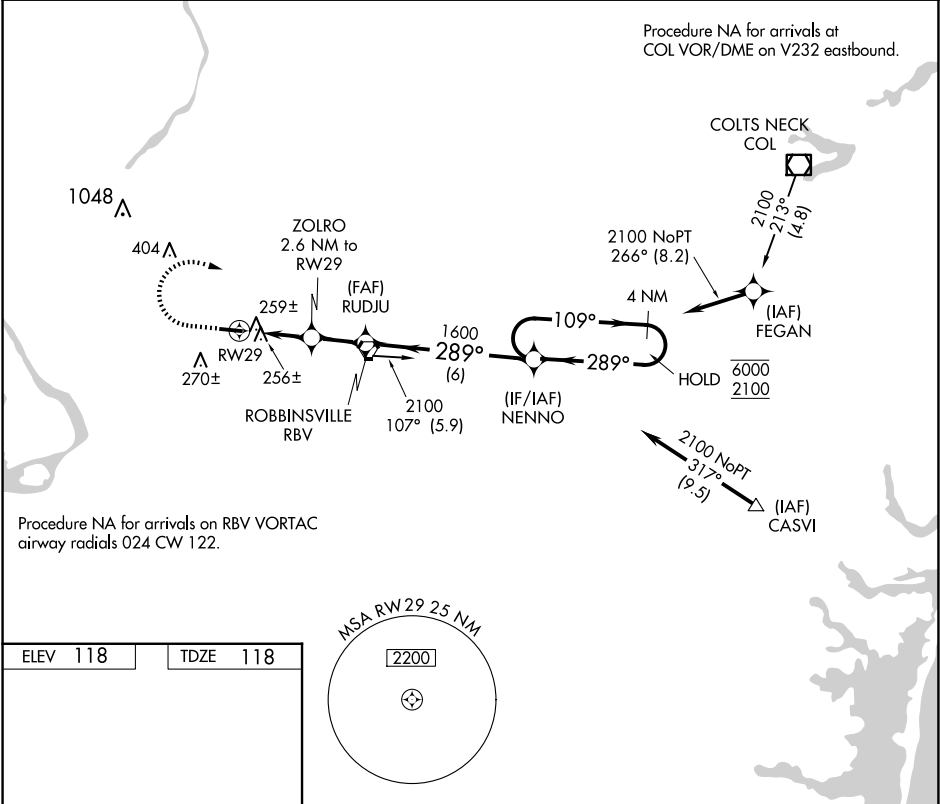
TRENTON-ROBBINSVILLE (N87)

RNP APCH.

Procedure NA at night. Rwy 29 helicopter visibility reduction below 1 SM NA. Use Wrightstown altimeter setting.

MISSED APPROACH: Climb to 1000, then climbing right turn to 2100 direct NENNO and hold.

MC GUIRE APP CON	UNICOM	123.3 0
126.475 363.8	123.0 (CTAF)	



	1000	2100	NENNO	Visual Segment - Obstacles.			
				4 NM Holding Pattern			
				109° → 6000 ← 289° 2100			
	RW29 2.6 NM 1.9 NM 6 NM						
CATEGORY	A		B		C		D
LNAV MDA	540-1		422 (500-1)		540-1¼		422 (500-1¼)
CIRCLING	680-1		562 (600-1)		680-1½ 562 (600-1½)		760-2 642 (700-2)

NE-2, 07 AUG 2025 to 04 SEP 2025

NE-2, 07 AUG 2025 to 04 SEP 2025