

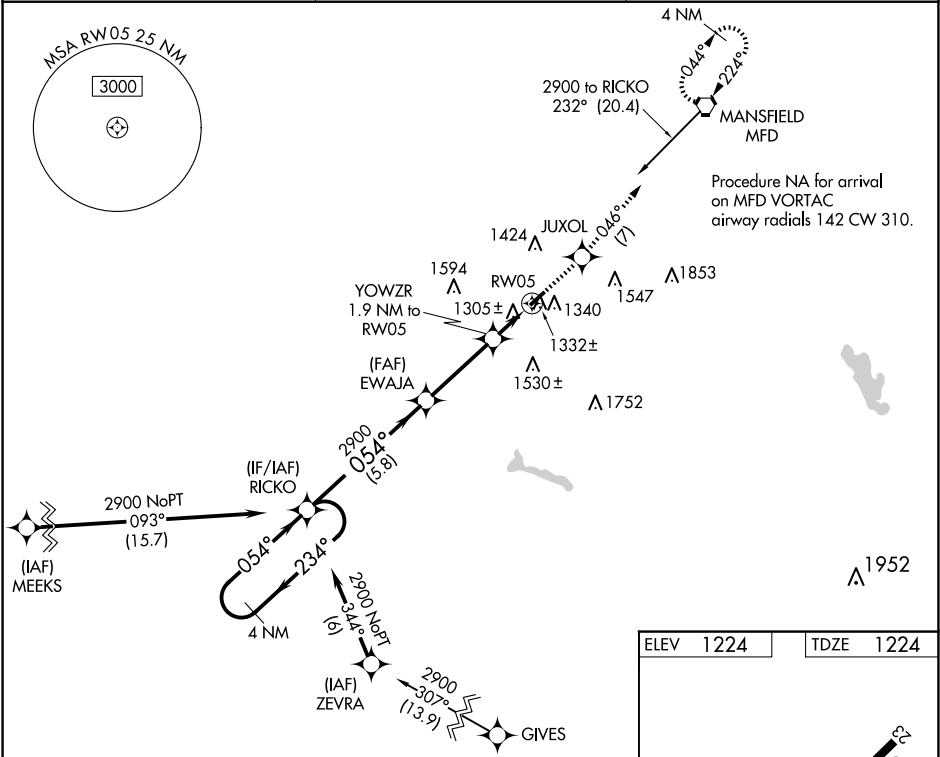
WAAS CH 69223 W05A	APP CRS 054°	Rwy Idg TDZE 1224 Apt Elev 1224	3318
--	------------------------	---	-------------

RNAV (GPS) RWY 5

GALLION MUNI (GQQ)

<div><div>NA</div><div>Helicopter visibility reduction below 1 SM NA. DME/DME RNP-0.3 NA. Use Mansfield altimeter setting. Straight-in Rwy 5 NA at night, Circling Rwy 5 NA at night.</div></div>	MISSED APPROACH: Climb to 2900 direct JUXOL and on track 046° to MFD VORTAC and hold.
---	---

CLEVELAND APP CON ★ 128.35 360.65	CLNC DEL 126.8	UNICOM 122.8 (CTAF) 0
---	--------------------------	---------------------------------



4 NM Holding Pattern

2900

←234°

054°→

RICKO

EWAJA

YOWZR

1.9 NM to RW05

3.00°

TCH 31

2900

1840

5.8 NM

3.3 NM

1.9

2900

JUXOL

tr 046°

MFD

CATEGORY	A	B	C	D
LP MDA	1600-1 376 (400-1)			NA
LNAV MDA	1620-1 396 (400-1)		1620-1½ 396 (400-1½)	NA
CIRCLING	1800-1 576 (600-1)	1960-1 736 (800-1)	1960-2 736 (800-2)	NA

MIRL Rwy 5-23 0

REIL Rwys 5 and 23 0

3504 X75

054° to RW05

EC-2, 07 AUG 2025 to 04 SEP 2025

EC-2, 07 AUG 2025 to 04 SEP 2025