

WAAS CH 57923 W23A	APP CRS 235°	Rwy Idg TDZE 1224 Apt Elev 1224
--	------------------------	---

RNAV (GPS) RWY 23

GALLION MUNI (GQQ)

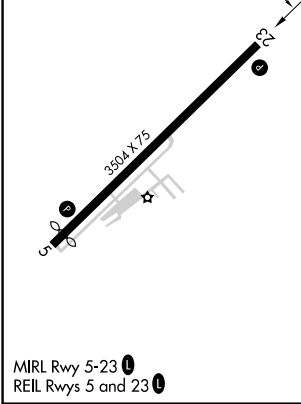
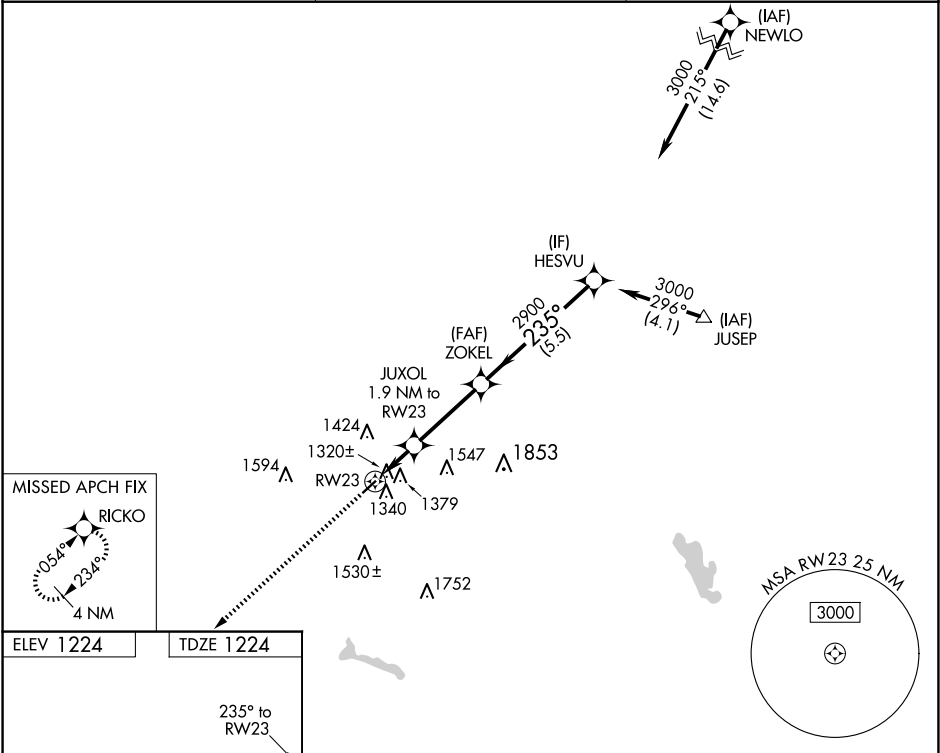
⚠

NA

Helicopter visibility reduction below ¾ SM NA. DME/DME RNP-0.3 NA. Use Mansfield altimeter setting. Circling Rwy 5 NA at night.

MISSED APPROACH:
Climb to 2900 direct RICKO and hold.

CLEVELAND APP CON ★ 128.35 360.65	CLNC DEL 126.8	UNICOM 122.8 (CTAF) 0
---	--------------------------	---------------------------------



2900

RICKO

↑

✱

JUXOL

1.9 NM to RW23

ZOKEL

✱

HESVU

3000

RW23

1860

1.9 NM

2900

3.3 NM

235°

3.00°

TCH 40

5.5 NM

CATEGORY	A	B	C	D
LP MDA	1620-1	396 (400-1)	1620-1½ 396 (400-1½)	NA
LNAV MDA	1760-1	536 (600-1)	1760-1½ 536 (600-1½)	NA
CIRCLING	1800-1 576 (600-1)	1960-1 736 (800-1)	1960-2 736 (800-2)	NA

EC-2, 07 AUG 2025 to 04 SEP 2025

EC-2, 07 AUG 2025 to 04 SEP 2025