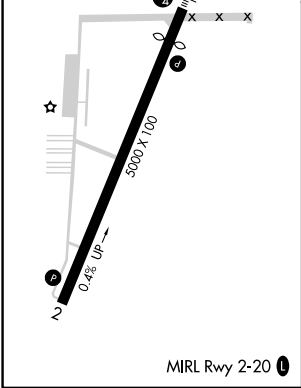
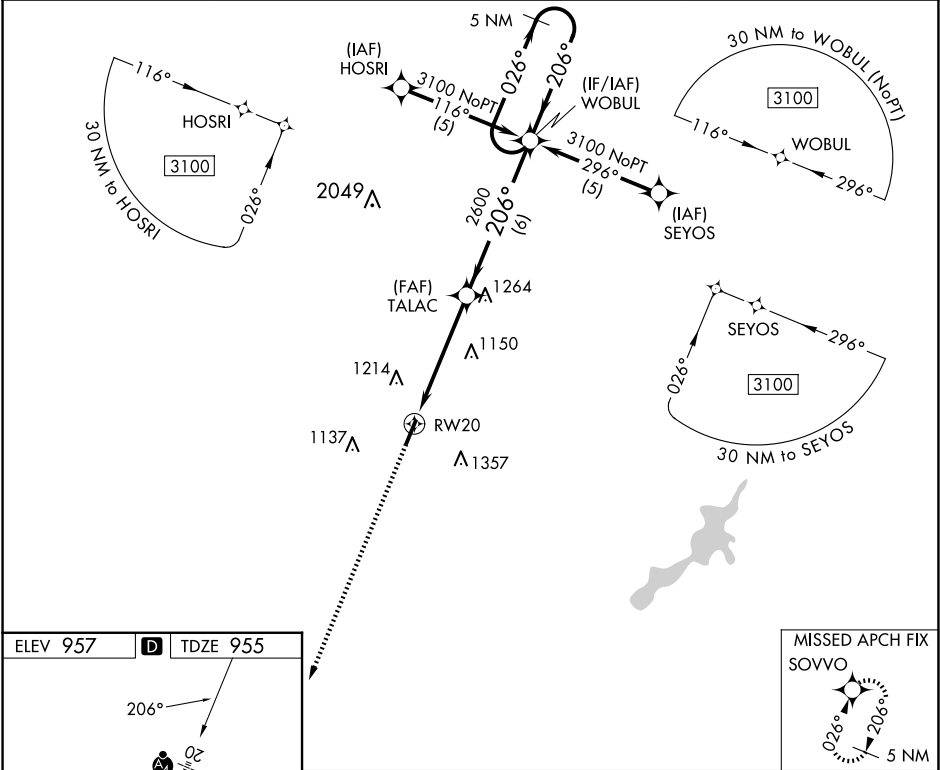


WAAS CH 93601 W20A	APP CRS 206°	Rwy Idg TDZE Apt Elev	4410 955 957
--	------------------------	-----------------------------	---

RNAV (GPS) RWY 20
DAYTON/WRIGHT BROTHERS (MGY)

RNP APCH.	<p>⚠ Inoperative table does not apply. When local altimeter setting not received, use James M Cox Dayton Intl altimeter setting and increase all DAs/MDAs 60 feet and Circling Cat C/D visibility ¼ SM. Rwy 20 helicopter visibility reduction below ¾ SM NA. VDP NA when using James M Cox Dayton Intl altimeter setting.</p>	MALS 	MISSED APPROACH: Climb to 3100 direct SOVVO and hold.
-----------	--	----------	--

ASOS 118.375	COLUMBUS APP CON 118.85 269.275	CLNC DEL 119.4	UNICOM 122.8 (CTAF) 0
------------------------	---	--------------------------	---------------------------------



3100 ↑ SOVVO		WOBBUL		5 NM Holding Pattern	
* LNAV only.		TALAC		026° → 3100 ← 206°	
* 1.4 NM to RW20		2600		GP 3.00° TCH 40°	
1.4		3.6 NM		6 NM	
CATEGORY	A		B	C	D
LPV DA	1294-1¼		339 (400-1¼)		
LNAV MDA	1440-1 485 (500-1)		1440-1¼ 485 (500-1¼)		1440-1½ 485 (500-1½)
CIRCLING	1480-1¼ 523 (600-1¼)		1520-1¼ 563 (600-1¼)		1660-2 703 (800-2¼)