

WAAS CH <b>49028</b> <b>W31A</b>	APP CRS <b>313°</b>	Rwy Idg TDZE <b>1304</b> Apt Elev <b>1317</b>	<b>9033</b>
--	------------------------	---	-------------

RNAV (GPS) RWY 31

ROCHESTER INTL (RST)

RNP APCH - GPS.		ALSIF-2	MISSED APPROACH: Climb to 3000 direct CORDY and hold.	
For uncompensated Baro-VNAV systems, LNAV/VNAV NA below -20°C or above 54°C. For inop ALS, increase LNAV/VNAV all Cats visibility to RVR 4500.				
ATIS <b>120.5</b>	ROCHESTER APP CON* <b>119.8 251.125</b>	ROCHESTER TOWER* <b>118.3 (CTAF) 257.8</b>	GND CON <b>121.9</b>	UNICOM <b>122.95</b>

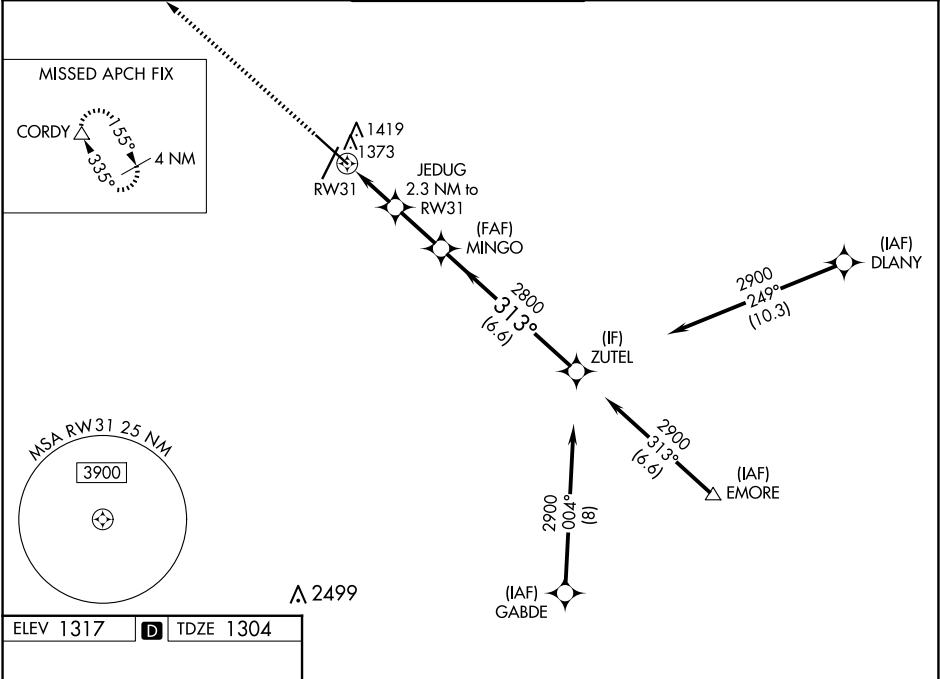


Diagram of RWY 31 showing the layout of lights and distances. The runway is 3034 x 130 feet. The TDZ/CL is 7301 x 130 feet. The HIRL is 9024 x 130 feet. The MIRL is 7301 x 130 feet. The REIL is 7301 x 130 feet. The runway is 313° and 313°.

TDZ/CL Rwy 13 and 31  
HIRL Rwy 13-31  
MIRL Rwy 3-21  
REIL Rwy 3 and 21

Diagram of the final approach segment from CORDY to ZUTEL. The approach is a 3.00° glide path with a TCH of 55 feet. The approach is divided into four segments: A (0.9 NM), B (2.2 NM), C (6.6 NM), and D (0.9 NM). The approach is 313° and 313°.

CORDY  
JEDUG 2.3 NM to RW31  
RW31 0.9 NM to RW31  
MINGO 2800  
ZUTEL 2900  
GP 3.00° TCH 55

CATEGORY	A	B	C	D
LPV DA	1504/18 200 (200-½)			
LNAV/VNAV DA	1579/24 275 (300-½)			
LNAV MDA	1640/24 336 (400-½)	1640/26 336 (400-½)		
CIRCLING	1720-1 403 (500-1)	1780-1 463 (500-1)	1900-1½ 583 (600-1½)	1900-2 583 (600-2)

NC-1, 07 AUG 2025 to 04 SEP 2025

NC-1, 07 AUG 2025 to 04 SEP 2025