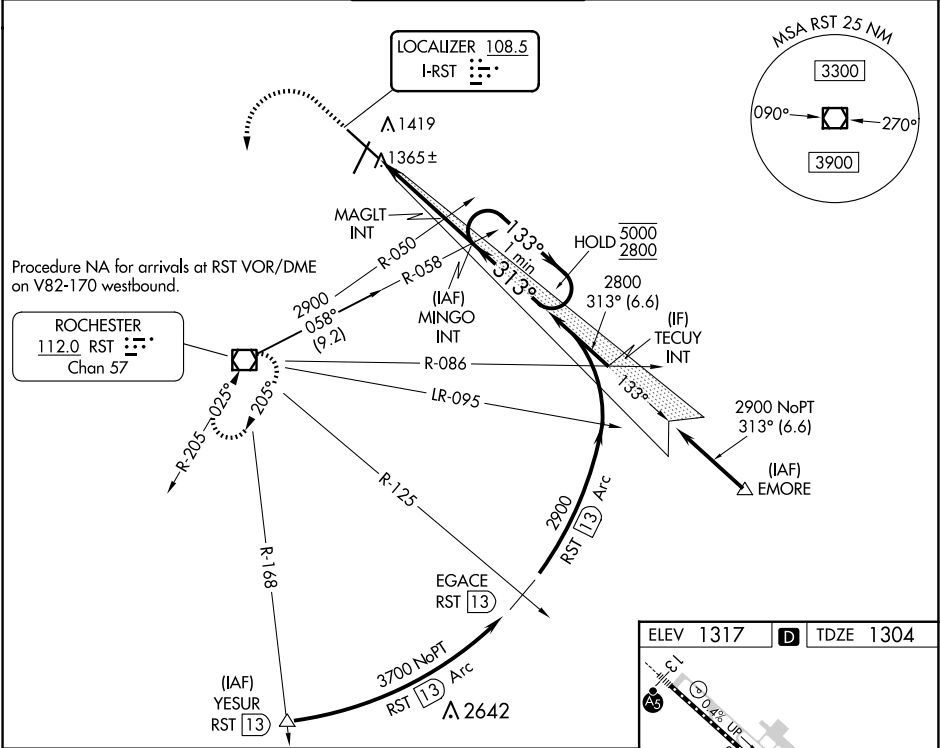


LOC I-RST 108.5	APP CRS 313°	Rwy Idg 9033 TDZE 1304 Apt Elev 1317
---------------------------	------------------------	---

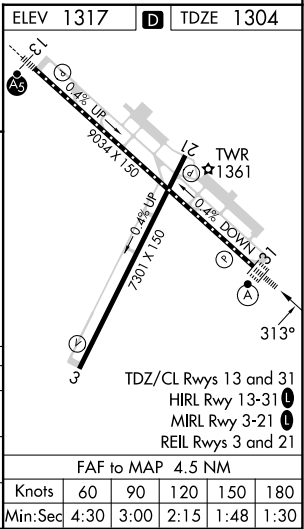
ILS Z or LOC Z RWY 31
ROCHESTER INTL (RST)

DME required for procedure entry at YESUR.	ALSF-2	MISSED APPROACH: Climb to 2000 then climbing left turn to 3000 direct RST VOR/DME and hold.
ASR For inop ALS, increase S-LOC 31 Cat C/D visibility to RVR 4500.		

ATIS 120.5	ROCHESTER APP CON* 119.8 251.125	ROCHESTER TOWER* 118.3 (CTAF) 257.8	GND CON 121.9	UNICOM 122.95
----------------------	--	---	-------------------------	-------------------------



2000	3000	RST	MINGO INT	2800	133°	5000	2800	GS 3.00°	TCH 55
			MAGLT INT	2380	313°	2800			
			One Minute Holding Pattern						
			3.2 NM 1.3 NM						
CATEGORY	A	B	C	D					
S-ILS 31	1504/18		200 (200-½)						
S-LOC 31	1620/24		316 (400-½)						
CIRCLING	1720-1 403 (500-1)	1780-1 463 (500-1)	1900-1½ 583 (600-½)	1900-2 583 (600-2)					



NC-1, 07 AUG 2025 to 04 SEP 2025

NC-1, 07 AUG 2025 to 04 SEP 2025