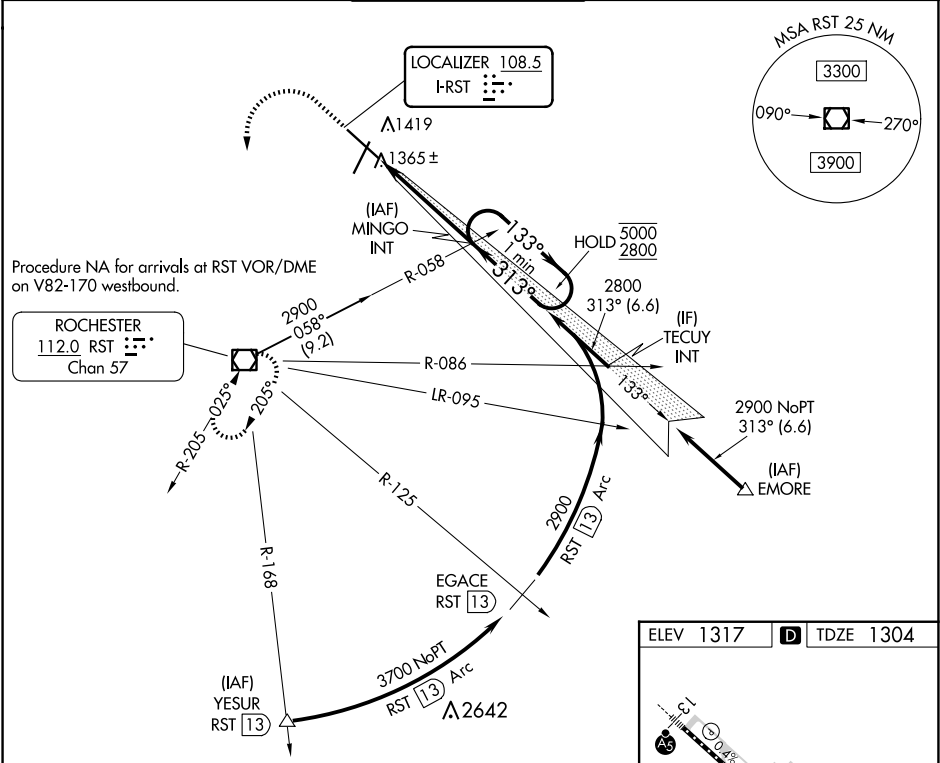


LOC I-RST 108.5	APP CRS 313°	Rwy Idg 9033 TDZE 1304 Apt Elev 1317	ILS Z RWY 31 (SA CAT I) ROCHESTER INTL (RST)	
---------------------------	------------------------	---	---	--

DME required for procedure entry at YESUR.		ALS-F-2	MISSED APPROACH: Climb to 2000 then climbing left turn to 3000 direct RST VOR/DME and hold.
ASR Requires specific OPSPEC, MSPEC, or LOA approval and use of HUD to DH. Procedure NA when tower closed.			

ATIS 120.5	ROCHESTER APP CON★ 119.8 251.125	ROCHESTER TOWER★ 118.3 (CTAF) 257.8	GND CON 121.9	UNICOM 122.95
----------------------	--	---	-------------------------	-------------------------



ELEV 1317 TDZE 1304	
TDZ/CL Rws 13 and 31 HIRL Rwy 13-31 MIRL Rwy 3-21 REIL Rws 3 and 21	
SA CATEGORY I ILS - SPECIAL AIRCREW & AIRCRAFT CERTIFICATION REQUIRED	