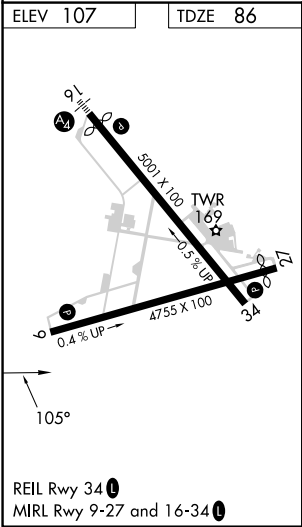
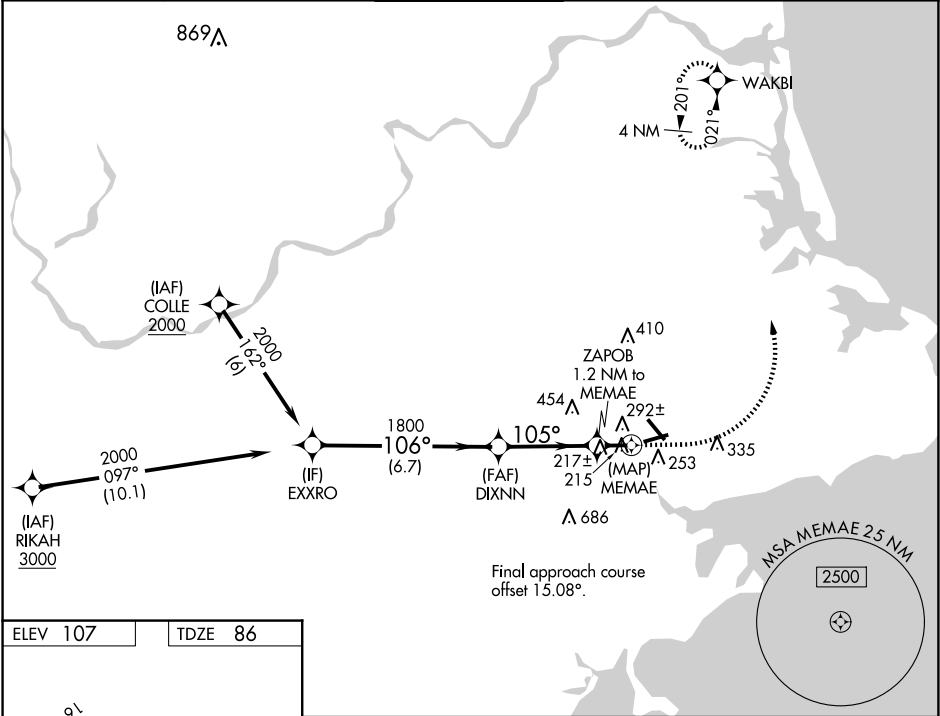


WAAS CH 65640 W09A	APP CRS 105°	Rwy Idg TDZE 86 Apt Elev 107	4755
--	------------------------	--	-------------

RNAV (GPS) RWY 9
BEVERLY RGNL (BVY)

RNP APCH - GPS. <div><div></div><div>Rwy 9 helicopter visibility reduction below 1 SM NA. Straight-in Rwy 9 NA at night, Circling Rwy 9 NA at night.</div></div>			MISSED APPROACH: Climb to 600 then climbing left turn to 2000 direct WAKBI and hold.	
ATIS 119.2	BOSTON APP CON 124.4 279.6	BEVERLY TOWER★ 125.2 (CTAF) 0	GND CON 121.6	UNICOM 122.95



VGSI and descent angles not coincident (VGSI Angle 3.00/TCH 43).					600	2000	WAKBI
EXXRO							
2000							
106°							
DIXNN							
1800							
105°							
3.08° TCH 55							
700							
ZAOB 1.2 NM to MEMAE							
MEMAE							
6.7 NM							
3.5 NM							
1.2 NM							
0.5							
CATEGORY	A	B	C	D			
LP MDA	480-1	394 (400-1)	480-1½	394 (400-1½)			
LNAV MDA	560-1	474 (500-1)	560-1¾	474 (500-1¾)			
CIRCLING	600-1	493 (500-1)	820-2 713 (800-2)	820-2¼ 713 (800-2¼)			