

WAAS CH <b>97631</b> <b>W34A</b>	APP CRS <b>337°</b>	Rwy Idg <b>5001</b> TDZE <b>102</b> Apt Elev <b>107</b>
--	------------------------	---

## RNAV (GPS) RWY 34

BEVERLY RGNL (BVY)

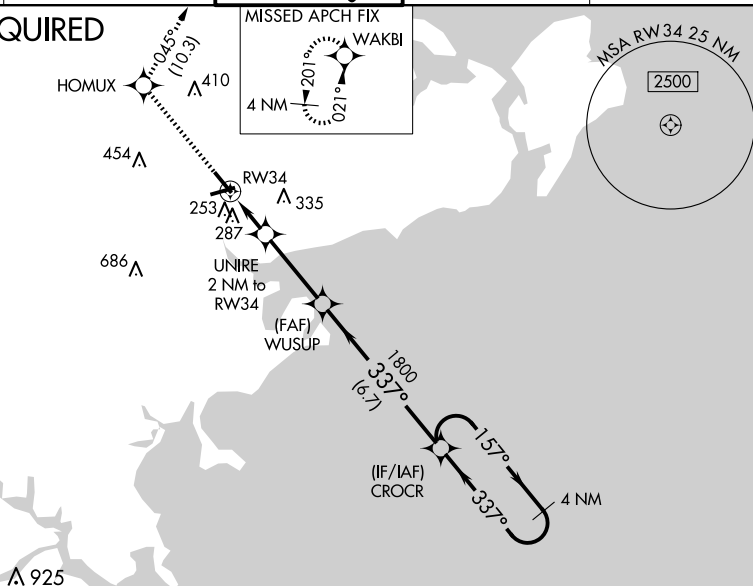
**T**  
**A**

For uncompensated Baro-VNAV systems, LNAV/VNAV NA below -18°C (0°F) or above 54°C (130°F): Baro-VNAV and VDP NA when using Lawrence altimeter setting; DME/DME RNP-0.3 NA. When local altimeter setting not received, use Lawrence altimeter setting; increase LPV DA to 416 and LNAV/VNAV DA to 502 and all MDA 40 feet; increase LPV all Cats visibility and LNAV/VNAV/VNAV 1/4 SM visibility and LNAV Cats C and D visibility 1/8 SM and Circling Cats C and D visibility 1/4 SM. Circling Rwy 9 NA at night. Rwy 34 helicopter visibility reduction below 3/4 SM NA. Rwy 9 helicopter visibility reduction below 1 SM NA.

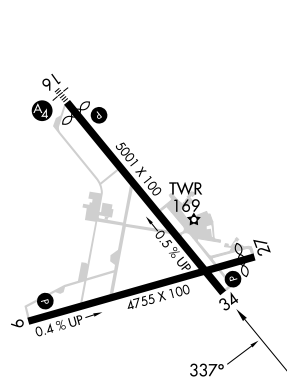
**MISSED APPROACH:**  
Climb to 2000 direct  
HOMUX and on track  
045° to WAKBI and hold.

ATIS 119.2	BOSTON APP CON 124.4 279.6	BEVERLY TOWER★ 125.2 (CTAF) 0	GND CON 121.6	UNICOM 122.95
---------------	-------------------------------	----------------------------------	------------------	------------------

## RADAR REQUIRED



ELEV 107		TDZE 102
----------	--	----------



REIL Rwy 34 **L**  
MIRL Rwy 9-27 and 16-34 **L**

2000 ↑	HOMUX ✱	tr 045°	WAKBI ✱				
* LNAV only.							
CATEGORY	A		B		C		D
LPV DA	382-1		280 (300-1)				
LNAV/ VNAV DA	468-1¼		366 (400-1¼)				
LNAV MDA	540-1	438 (500-1)	540-1¼	438 (500-1¼)			
<b>C</b> CIRCLING	600-1	493 (500-1)	820-2 713 (800-2)	880-2½ 773 (800-2½)			