

WAAS CH <b>82004</b> <b>W05A</b>	APP CRS <b>050°</b>	Rwy ldg <b>10960</b> TDZE <b>93</b> Apt Elev <b>93</b>
--	------------------------	--

## RNAV (GPS) RWY 5

KINSTON RGNL JETPORT AT STALLINGS FLD (ISO)

RNP APCH - GPS.

**V** For uncompensated Baro-VNAV systems, LNAV/VNAV NA below -15°C or above 54°C. Baro-VNAV and VDP NA when using GSB altimeter setting. When local altimeter setting not received, use GSB altimeter setting: increase LPV DA to 336 feet; increase LNAV/VNAV DA to 529 feet and all visibilities to RVR 4000; increase all MDAs 60 feet and LNAV visibility Cat C/D to RVR 4500 and Circling visibility Cat D ¼ SM. For inop ALS, increase LNAV/VNAV all Cats visibility to RVR 4500 and LNAV Cats A and B visibility to RVR 5500 and Cats C and D to RVR 6000. For inop ALS when using GSB altimeter setting, increase LNAV Cats A and B visibility to RVR 5500 and Cats C and D to 1 ½ mile.

\* RVR 1800 authorized with use of FD or AP or HUD to DA (NA when using GSB altimeter setting).

MALSR

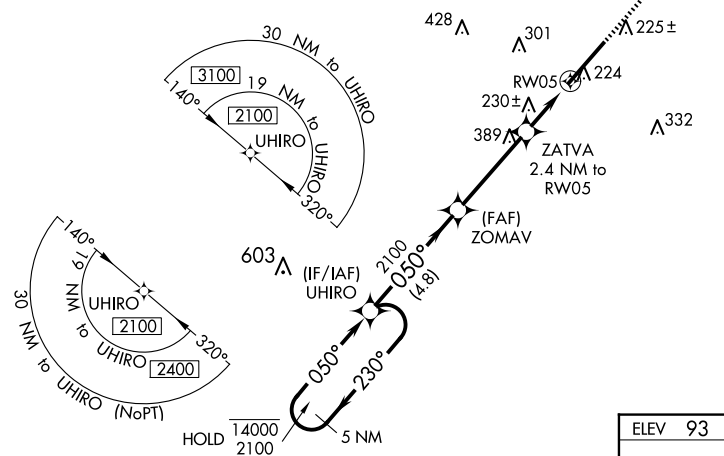
**MISSED APPROACH:**  
Climb to 2500 direct  
WINTI and hold.

AWOS-3  
132.75

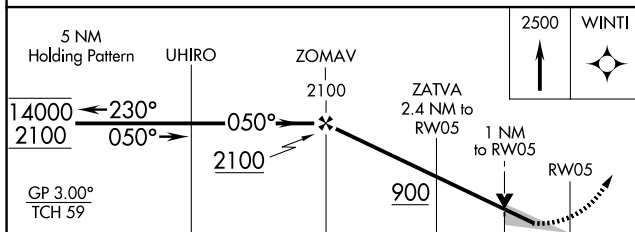
SEYMOUR JOHNSON APP CON ★  
127.3 273.6


KINSTON TOWER ★  
120.6 (CTAF) **L** 335.55

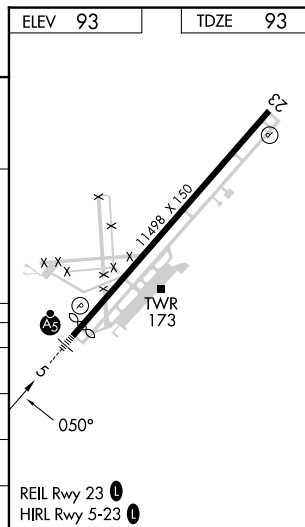
GND CON  
**121.9**

UNICOM  
122.95

MISSED APCH FIX



CATEGORY		A	B	C	D
LPV	DA*	293/24		200 (200-½)	
INAV/ VNAV	DA	486/35		393 (400-⅝)	
INAV	MDA	480/24 387 (400-½)		480/35 387 (400-⅝)	
 CIRCLING		580-1 487 (500-1)		700-1¾ 607 (700-1¾)	740-2 647 (700-2)



KINSTON, NORTH CAROLINA  
Amdt 3C 26DEC24

KINSTON RGNL JETPORT AT STALLINGS FLD (ISO)

35°20'N-77°37'W

RNAV (GPS) RWY 5

SE-2, 07 AUG 2025 to 04 SEP 2025

SE-2, 07 AUG 2025 to 04 SEP 2025