

WAAS
CH **56413**
W36A

APP CRS
359°

Rwy Idg
TDZE
Apt Elev
6508
8
9

RNAV (GPS) RWY 36

HOUMA-TERREBONNE (HUM)

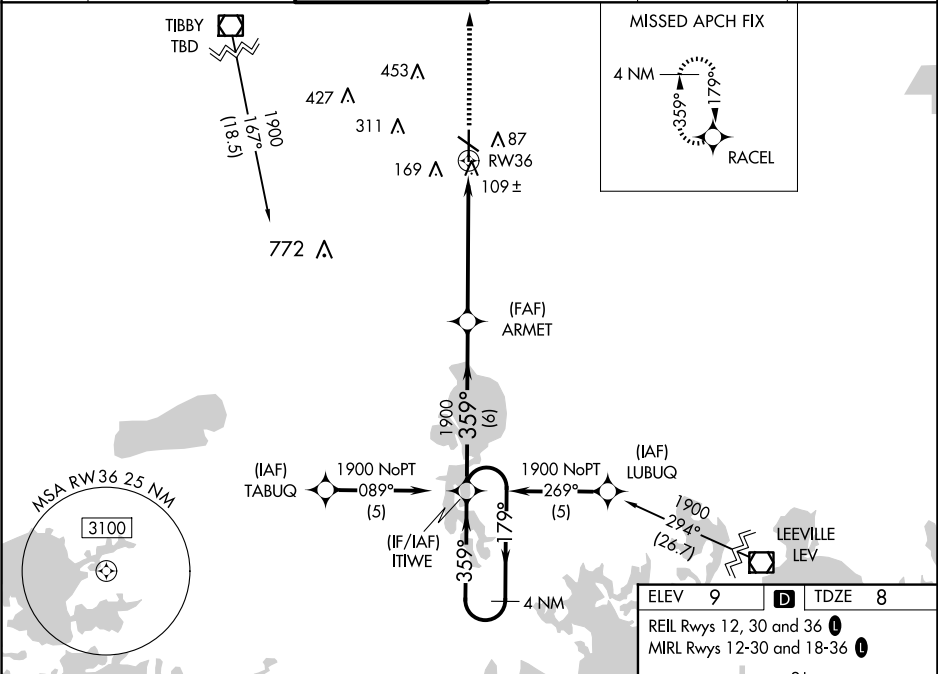
▼

Baro-VNAV NA when using Louis Armstrong New Orleans Intl altimeter setting.
For uncompensated Baro-VNAV systems, LNAV/VNAV NA below -15°C (5°F) or above 49°C (120°F). DME/DME RNP-0.3 NA. Visibility reduction by helicopters NA. When local altimeter setting not received, use Louis Armstrong New Orleans Intl altimeter setting: increase LPV DA to 408, LNAV/VNAV DA to 518, and all visibilities ½ SM; increase all MDAs 80 feet and visibility Cats C and D ¼ SM.

⚠

MISSED APPROACH: Climb to 2300 direct RACEL and hold.

ATIS 120.25	NEW ORLEANS APP CON 118.9 350.35	HOUMA TOWER ★ 125.3 (CTAF) 0 346.3	GND CON 123.875	CLNC DEL 118.9 (When twr closed)	UNICOM 122.95
-----------------------	--	--	---------------------------	---	-------------------------



4 NM Holding Pattern

ITWE

ARMET

2300 RACEL

GP 3.00° TCH 40°

1900 ← 179° 359° → 359° → 1900

6 NM 5.7 NM

RW36

VGSI and RNAV glidepath not coincident (VGSI Angle 3.00/TCH 50).

4 NM

ITWE

ARMET

2300

RACEL

CATEGORY	A	B	C	D
LPV DA	331-1		323 (400-1)	
LNAV/VNAV DA	441-1¼		433 (500-1¼)	
LNAV MDA	460-1	452 (500-1)	460-1¾	452 (500-1¾)
CIRCLING	480-1	471 (500-1)	760-2¼ 751 (800-2¼)	760-2½ 751 (800-2½)

81

100

4999 X 185

501 X 6059

TWR 88

36

359°