

WAAS CH 99413 W18A	APP CRS 179°	Rwy Ldg 6143 TDZE 8 Apt Elev 9
--	------------------------	---

RNAV (GPS) RWY 18

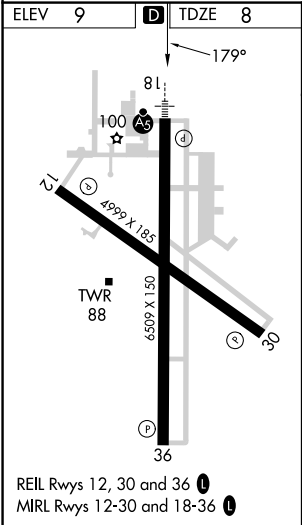
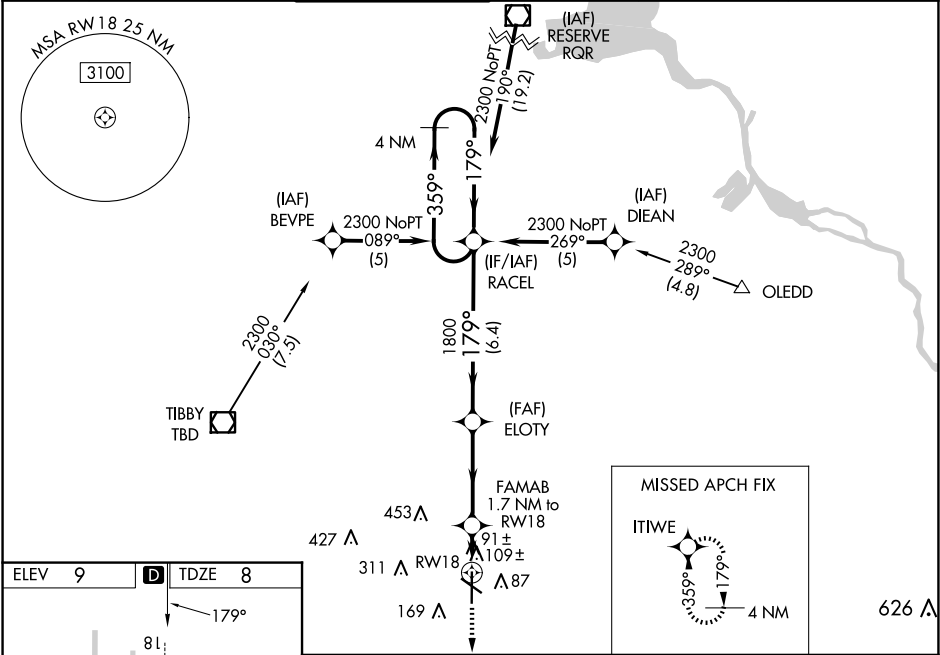
HOUMA-TERREBONNE (HUM)

Baro-VNAV NA when using Louis Armstrong New Orleans Intl altimeter setting. For uncompensated Baro-VNAV systems, LNAV/VNAV NA below -15°C (5°F) or above 49°C (120°F). DME/DME RNP-0.3 NA. When local altimeter setting not received, use Louis Armstrong New Orleans Intl altimeter setting: increase LPV DA to 285, increase LNAV/VNAV DA to 526 and all visibilities ½ SM; increase all MDAs 80 feet and visibility Cats C and D ¼ SM. For inop ALS when using Louis Armstrong New Orleans Intl altimeter setting increase all LPV visibilities to ¾ SM, increase all LNAV/VNAV visibilities and LNAV Cats C and D visibility to 1 ¾ SM.

MALSR

MISSED APPROACH:
Climb to 1900 direct
ITWE and hold.

ATIS 120.25	NEW ORLEANS APP CON 118.9 350.35	HOUMA TOWER ★ 125.3 (CTAF) 346.3	GND CON 123.875	CLNC DEL 118.9 (When twr closed)	UNICOM 122.95
-----------------------	--	--	---------------------------	---	-------------------------



1900	ITWE	VGSI and RNAV glidepath not coincident (VGSI Angle 3.00/TCH 52).		4 NM	Holding Pattern
*LNAV only.		FAMAB 1.7 NM to RW18	ELOTY	179°	2300
		600*	1800	359°	
		1.7 NM	3.7 NM	6.4 NM	GP 3.00° TCH 52
CATEGORY	A	B	C	D	
LPV DA	208-1/2		200 (200-1/2)		
LNAV/VNAV DA	449-7/8		441 (500-7/8)		
LNAV MDA	440-1/2	432 (500-1/2)	440-3/4	432 (500-3/4)	
CIRCLING	480-1	471 (500-1)	760-2 1/4 751 (800-2 1/4)	760-2 1/2 751 (800-2 1/2)	